



Woodmere, Eltham, SE9

Guide Price £475,000

🛏️ 3 🚿 1 🚗 1

- Chain Free Sale
- Private Road
- Generous Open Plan Lounge/ Dining Room
- Well Maintained Garden To Rear
- Private Garage
- Within A Stones Throw Of Prestigious Royal Blackheath Golf Club
- Easy Reach Of Eltham High Street Shops, Eateries & Leisure Facilities
- Walking Distance To Mottingham Railway Station & Excellent Bus Links
- Council Tax Band D - Royal Borough Of Greenwich

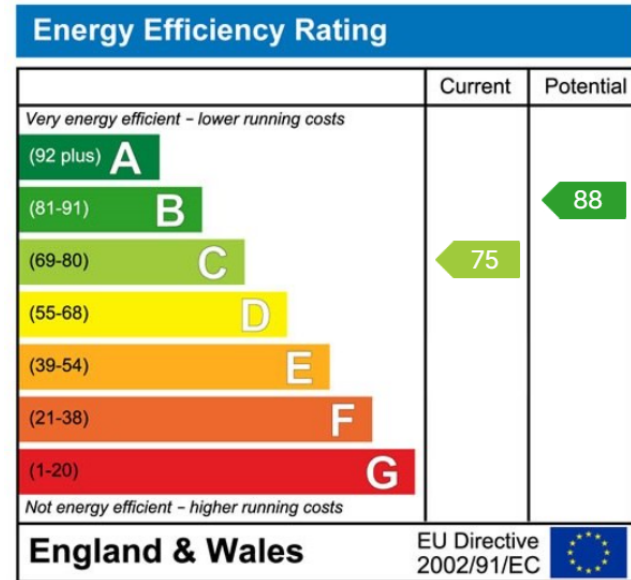
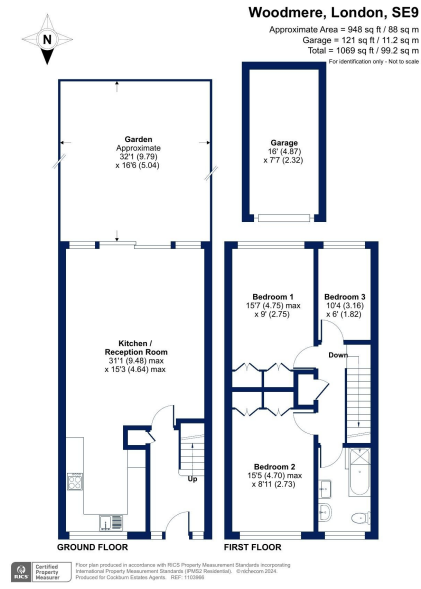


***** GUIDE PRICE £475,000 - £500,000 - CHAIN FREE *****

Cockburn are excited to present to the market this wonderful three bed terraced home, offered to the market chain free and in turn-key condition throughout!

Situated within a private residential road close to Mottingham main line station (0.2 miles) and within close proximity to Eltham High street shops & amenities, this stunning mid terraced home is the ideal family home. The property briefly comprises of large open plan reception/kitchen, two double bedrooms, one single bedroom and a family bathroom. To the rear is a beautifully maintained garden, complete with both patio and lawned grass areas, whilst owners will have the added benefit of having their own garage providing plentiful storage, whilst being situated within easy reach of both Mottingham & Eltham railway stations, with excellent bus links on hand keeping you connected with Eltham, Greenwich & beyond.





Cockburn EA
 352 Footscray Road,
 London, SE9 2EB
 t: 020 8859 8590