



Leysdown Road, Mottingham, SE9

Guide Price £750,000 - £800,000

🛏️ 4 🚿 2 🚗 1



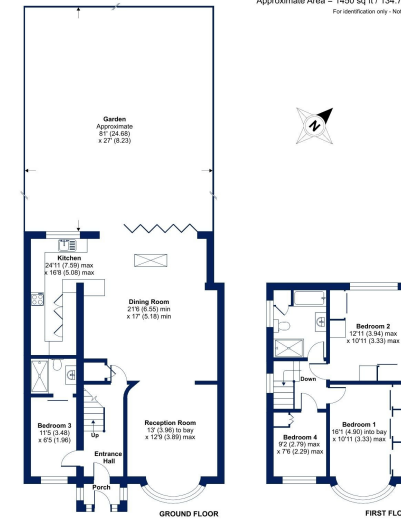
- Three/Four Bedroom Semi-Detached House
- Off Street Parking
- Walking Distance To Mottingham Village Shops & Amenities
- Excellent Bus Links Keeping You Connected With Bromley, Chislehurst & Eltham
- EPC Rating D - Potential C
- Extended Kitchen/Dining Room
- Generous 81' Garden To Rear
- Close Proximity To Highly Regarded Nurseries & Schools
- 10-15 Minute Walk To Mottingham Railway Station
- Council Tax Band E - Royal Borough Of Greenwich





Leysdown Road, London, SE9

Approximate Area = 1450 sq ft / 134.7 sq m
For information only - Not to scale

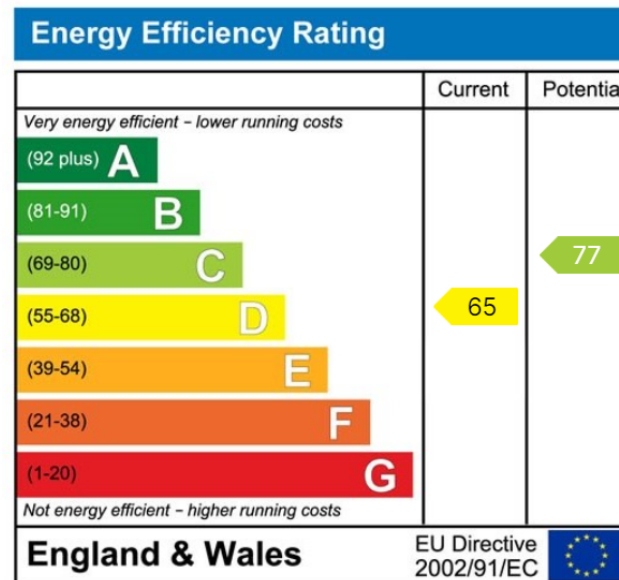


© Cockburn EA
This plan is intended to be used in conjunction with the RICS (Royal Institution of Chartered Surveyors) HomeBuyer Report (HBR) or the RICS (Royal Institution of Chartered Surveyors) Valuation and Property Measurement Database (VPM2) Report. © Cockburn EA 2024
Professional Councils: Estate Agents: 020 8859 8590

***** GUIDE PRICE £750,000 - £800,000 *****

Charming Family Home in Mottingham - Leysdown Road, London, SE9

Discover the epitome of comfortable family living in this well-presented four-bedroom semi-detached home located at Leysdown Road. Located in the heart of Mottingham, this property offers a perfect blend of modern convenience and traditional charm.



Cockburn EA

352 Footscray Road,
London, SE9 2EB

t: **020 8859 8590**