



## Kenley Close, Bexley, DA5

Offers Over £600,000

🛏️ 3 🚿 1 🛋️ 1



- Chain Free Sale
- Deceptively Spacious
- Off Street Parking & Garage
- Within Easy Reach Of Transport Links, Schools, Shops & Amenities
- EPC Rating C - Potential B
- Recently Refurbished To A Super High Standard Throughout
- Sunny Private Garden To Rear
- Double Glazed & Gas Central Heating
- Highly Regarded Schools & Nurseries Within Close Proximity
- Council Tax Band E - London Borough Of Bexley



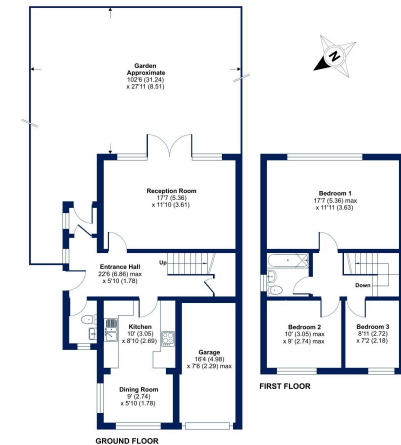
# Introducing Kenley Close – A Stunning Three-Bedroom Home In The Heart Of Bexley Village

*This hidden gem, deceptively spacious and recently refurbished to the highest standards, offers an ideal combination of comfort, location and style.*

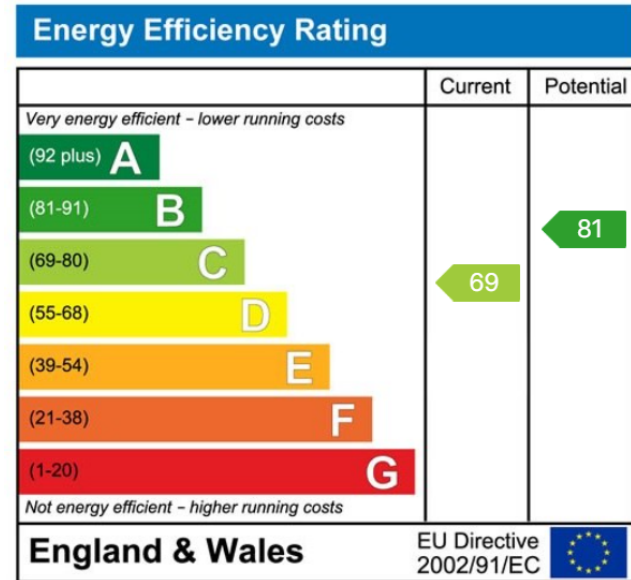


### Kenley Close, Bexley, DA5

Approximate Area = 1164 sq ft / 108 sq m (includes garage)  
For information only - Not to scale



Energy Performance Certificate (EPC) Floor plan produced in accordance with RICS Property Measurement Standards incorporating International Property Measurement Standards (IPMS) Residences. © Cockburn 2024. Prepared for Cockburn Estate Agents. 1001 - 04/2024



**Cockburn EA**

352 Footscray Road,  
London, SE9 2EB

t: **020 8859 8590**