



Kenley Close, Bexley, DA5

£600,000

🛏️ 3 🚿 1 🛋️ 1



- Chain Free Sale
- Deceptively Spacious
- Off Street Parking & Garage
- Within Easy Reach Of Transport Links, Schools, Shops & Amenities
- EPC Rating C - Potential B
- Recently Refurbished To A Super High Standard Throughout
- Sunny Private Garden To Rear
- Double Glazed & Gas Central Heating
- Highly Regarded Schools & Nurseries Within Close Proximity
- Council Tax Band E - London Borough Of Bexley



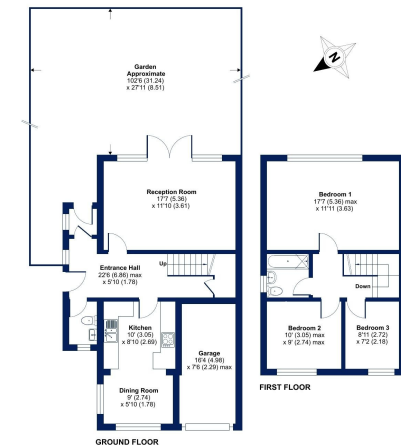
Introducing Kenley Close – A Stunning Three-Bedroom Home In The Heart Of Bexley Village

This hidden gem, deceptively spacious and recently refurbished to the highest standards, offers an ideal combination of comfort, location and style.

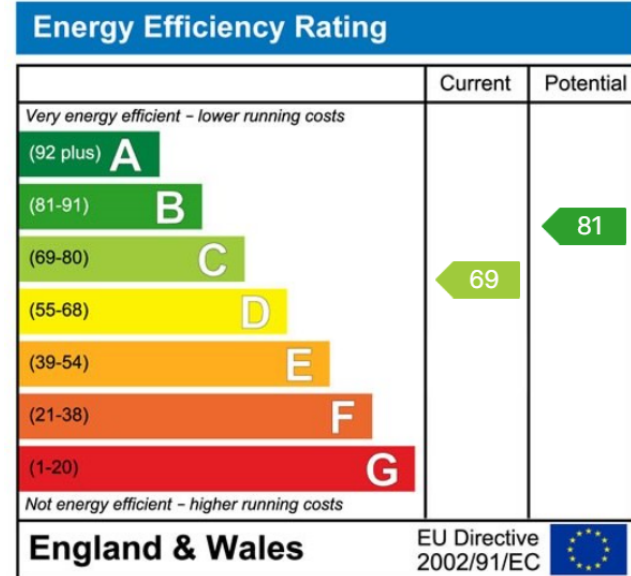


Kenley Close, Bexley, DA5

Approximate Area = 1164 sq ft / 108 sq m (includes garage)
For information only - Not to scale



Energy Performance Certificate (EPC) Floor plan produced in accordance with RICS Property Measurement Standards incorporating International Property Measurement Standards (IPMS) (Residential). © Cockburn 2024. Prepared for Cockburn Estate Agents. 1001 - 04/2024



Cockburn EA

352 Footscray Road,
London, SE9 2EB

t: **020 8859 8590**