



Prestbury Square, Mottingham, SE9

Offers Over £390,000

🛏️ 3 🚿 1 🚗 1



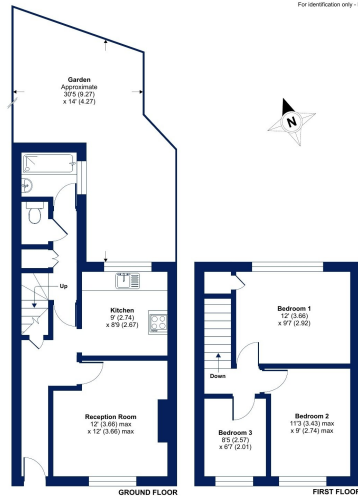
- Three Bed Terraced Family Home
- Two Double Bedrooms Along With One Single
- Off Street Parking
- Close to Elmstead Woods and Mottingham Stations & Within Easy Reach Of Bromley South
- Large Reception Room
- Charming Well-Maintained Garden To Rear
- Close To Both Mottingham Village & Chislehurst High Street
- Excellent Bus Links Keeping You Connected With Eltham, Bromley & Chislehurst
- Council Tax Band C - London Borough Of Bromley



Charming Three Bedroom Terraced Home in Mottingham, London



Prestbury Square, London, SE9
 Approximate Area = 731 sq ft / 67.9 sq m
 For information only - Not to scale



Energy Performance Certificate
 This plan produced in accordance with RICS Property Measurement Standards incorporating International Property Measurement Standards (IPMS) Guidelines. © inchitect 2023. Prepared for Cockburn Estate Agents. 1921 / 101188

