



# Prestbury Square, Mottingham, SE9

Offers Over £375,000

3 1 1



- Three Bed Terraced Family Home
- Two Double Bedrooms Along With One Single
- Off Street Parking
- Close to Elmstead Woods and Mottingham Stations & Within Easy Reach Of Bromley South
- Large Reception Room
- Charming Well-Maintained Garden To Rear
- Close To Both Mottingham Village & Chislehurst High Street
- Excellent Bus Links Keeping You Connected With Eltham, Bromley & Chislehurst
- Council Tax Band C - London Borough Of Bromley

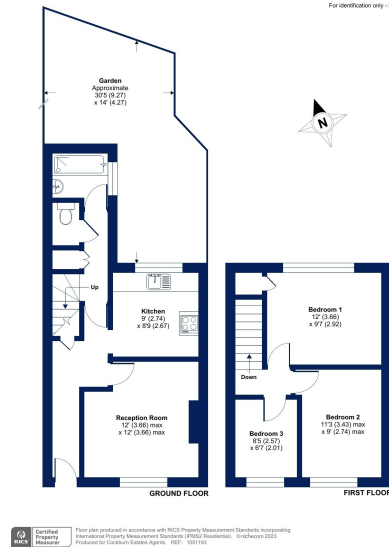


## Charming Three Bedroom Terraced Home in Mottingham, London

Discover the perfect family home at Prestbury Square. This wonderful three-bedroom terraced house offers an exceptional living experience, complete with a spacious reception room, a fitted kitchen, and a beautiful garden, all conveniently located in the heart of Mottingham.



Prestbury Square, London, SE9  
Approximate Area = 731 sq ft / 67.9 sq m  
For information only - Not to scale



Energy Efficiency Rating		
	Current	Potential
Very energy efficient - lower running costs		
(92 plus) <b>A</b>		
(81-91) <b>B</b>		88
(69-80) <b>C</b>	69	
(55-68) <b>D</b>		
(39-54) <b>E</b>		
(21-38) <b>F</b>		
(1-20) <b>G</b>		
Not energy efficient - higher running costs		
<b>England &amp; Wales</b>	EU Directive 2002/91/EC	

**Cockburn EA**

352 Footscray Road,  
London, SE9 2EB

t: 020 8859 8590