



Prestbury Square, Mottingham, SE9

Offers Over £375,000

🛏️ 3 🚿 1 🚻 1



- Three Bed Terraced Family Home
- Two Double Bedrooms Along With One Single
- Off Street Parking
- Close to Elmstead Woods and Mottingham Stations & Within Easy Reach Of Bromley South
- Large Reception Room
- Charming Well-Maintained Garden To Rear
- Close To Both Mottingham Village & Chislehurst High Street
- Excellent Bus Links Keeping You Connected With Eltham, Bromley & Chislehurst
- Council Tax Band C - London Borough Of Bromley

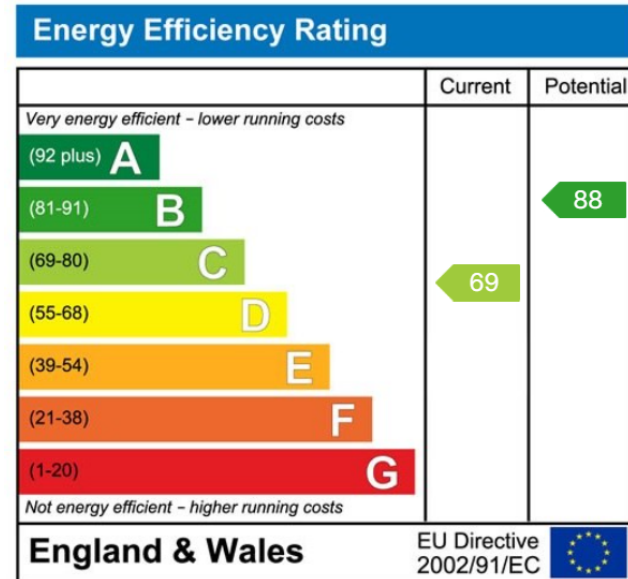
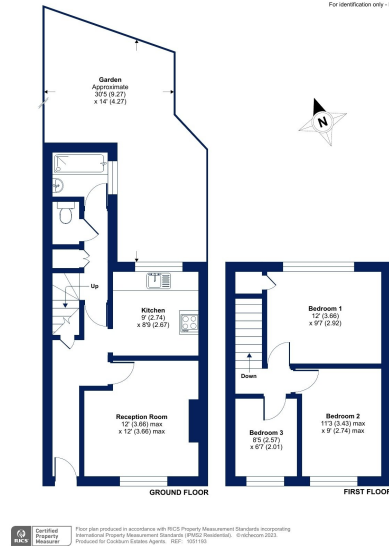


Charming Three Bedroom Terraced Home in Mottingham, London

Discover the perfect family home at Prestbury Square. This wonderful three-bedroom terraced house offers an exceptional living experience, complete with a spacious reception room, a fitted kitchen, and a beautiful garden, all conveniently located in the heart of Mottingham.



Prestbury Square, London, SE9
Approximate Area = 731 sq ft / 67.9 sq m
For information only - Not to scale



Cockburn EA

352 Footscray Road,
London, SE9 2EB

t: **020 8859 8590**