



## Bowmead, London, SE9

Offers Over £680,000

🛏️ 5 🚿 2 🚗 2

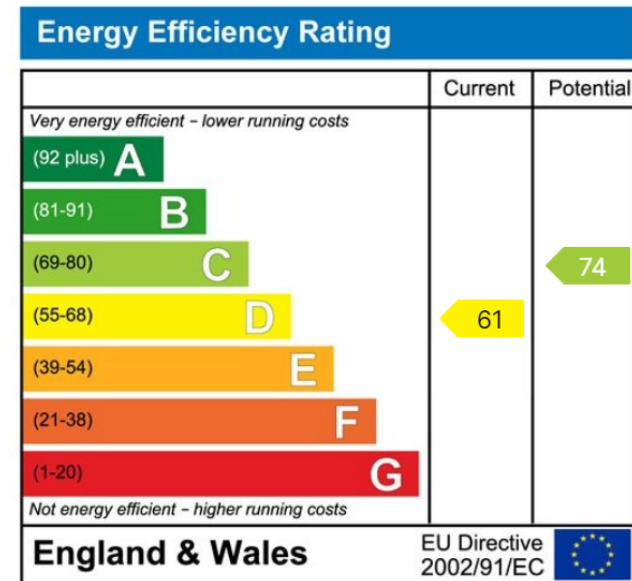
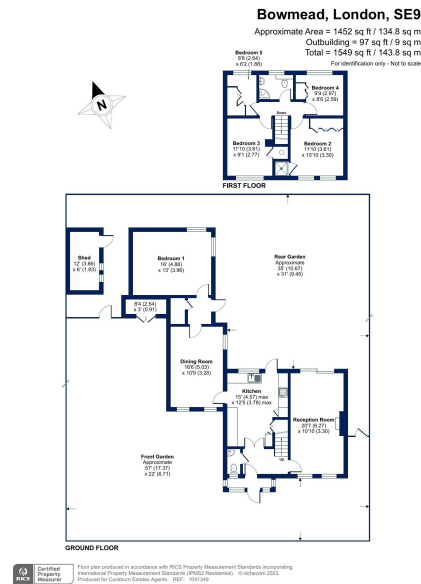


- Four/Five Bedroom Detached House
- Two Reception Rooms
- Off Street Parking For Numerous Vehicles
- Exceptionally Large Plot With Potential To Extend STPP
- Excellent Local Amenities & Highly Regarded Schools Nearby
- Larger Than Average Living Space Throughout
- Finished To A High Standard
- Well Maintained Garden To Rear
- Walking Distance To Mottingham Railway Station & Bus Links
- Council Tax Band E - Royal Borough Of Greenwich



## Introducing Bowmead, SE9 : Your Dream Home Awaits

Are you in search of your perfect family home? Look no further than this stunning four/five bedroom detached house located in the highly sought-after area of Bowmead, London. Offering a harmonious blend of space, comfort, and convenience, this property is the epitome of modern living.



**Cockburn EA**

352 Footscray Road,  
 London, SE9 2EB

t: **020 8859 8590**