



Old Farm Road West, Sidcup, DA15

£375,000

🛏️ 2 🚿 1 🚗 1



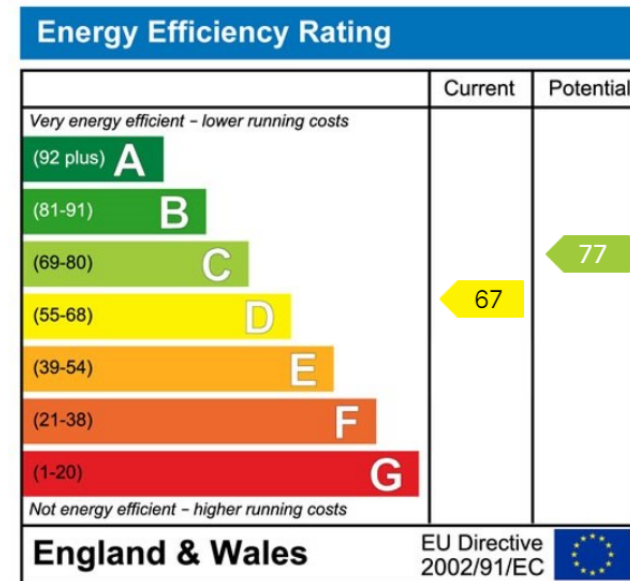
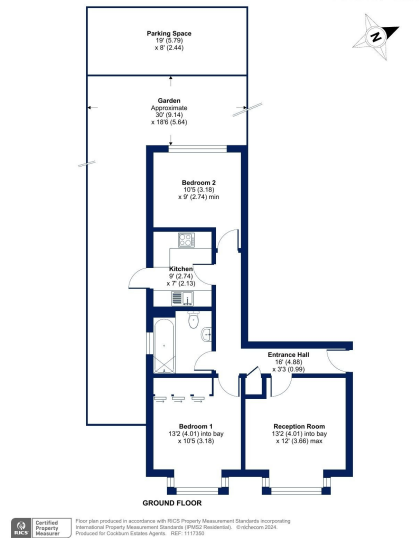
- Two Bedroom Ground Floor Apartment
- Modern Kitchen With Built In Appliances
- Ideal First Time Purchase Or Buy To Let Investment
- Easy Reach Of Sidcup High Street Shops, Eateries & Amenities
- EPC Rating D - Potential C
- Finished To High Standard Throughout
- Private Section Of Rear Garden
- 0.4 Mile To Sidcup Railway Station
- Off Street Parking
- Council Tax Band C - London Borough Of Bexley



Cockburn are proud to present to the market this wonderful two bedroom ground floor conversion apartment, finished to a high standard throughout and the ideal first time purchase or buy to let investment.



Old Farm Road West, Sidcup, DA15
Approximate Area = 605 sq ft / 56.2 sq m
For information only - Not to scale



Cockburn EA

352 Footscray Road,
London, SE9 2EB

t: 020 8859 8590