



## Framlingham Crescent, Mottingham, SE9

£2,500PCM (Deposit: £2,884)

🛏️ 5 🚿 3 🛋️ 1

- Five Double Bedrooms
- Recently Refurbished Throughout
- Finished To High Standard
- Long Term Let
- Available Now
- Off Street Parking
- Private Garden
- Excellent Transport Links Nearby
- \*\*\* NO SHARERS - NO HMO LICENSE \*\*\*
- Council Tax Band C - Bromley London Borough Council



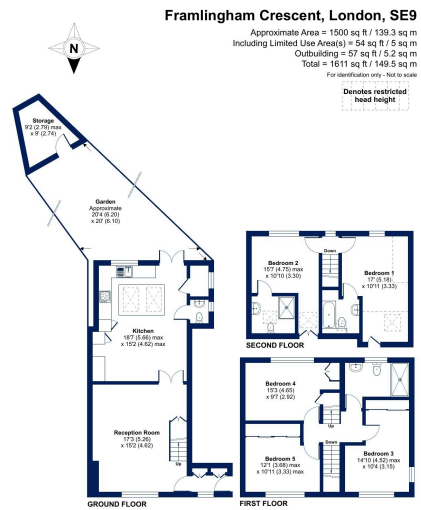
Tax Band: C Furnished: Part furnished

**\*\*\* NO SHARERS - NO HMO LICENSE \*\*\***

Cockburn are excited to bring to the rental market Framlingham Crescent, a well presented five-bedroom house located in the heart of London's SE9 postcode. Boasting a recent refurbishment, this property has been finished to an impeccable standard throughout.

*Briefly comprising large reception room, extended kitchen, downstairs W/C, five double bedrooms, and three bathrooms, and offers an abundance of space throughout.*

*The property has the added benefit of off street parking to the front, as well as a garden to the rear. In terms of location, Framlingham Crescent is within easy reach of both Elmstead Woods & Mottingham railway stations, with bus links also keeping you connected with the local area.*



Floor plan produced in accordance with RICS Property Measurement Standards incorporating International Property Measurement Standards (IPMS) (Residential). © Cockburn 2024. Prepared for Cockburn Estate Agents. 020 8859 8590



**Cockburn EA**  
 352 Footscray Road,  
 London, SE9 2EB  
 t: 020 8859 8590