

Merryfield House, Grove Park Road, SE9

£1,250PCM (Deposit: £1,442)

🛏 1 🚿 1 🚺 1



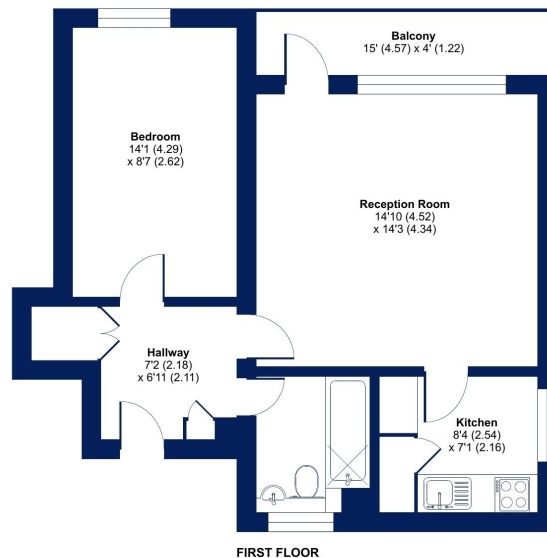
	Current	Potential
Very energy efficient - lower running costs		
(92 plus) A		
(81-91) B		
(69-80) C	72	75
(55-68) D		
(39-54) E		
(21-38) F		
(1-20) G		
Not energy efficient - higher running costs		

Tax Band: B Furnished:
Unfurnished

- One Bed Apartment
- Finished To High Standard Throughout
- Easy Reach Of Grove Park Railway Station
- Ideal For Working Professionals Or Couples
- First Floor With Lift
- Unfurnished
- Balcony
- Close Proximity To Leisure Facilities & Local Shops
- Council Tax Band B - London Borough Of Lewisham
- Available Now

Grove Park Road, SE9

Approximate Area = 532 sq ft / 49.4 sq m
For identification only - Not to scale



 Floor plan produced in accordance with RICS Property Measurement Standards incorporating International Property Measurement Standards (IPMS2 Residential). © rickson 2024. Produced for Cockburn Estates Agents. REF: 1081200

We are delighted to present Merryfield House, a well presented one-bedroom apartment available for rent, located in the heart of Grove Park, London. This residence offers a contemporary living experience, finished to a high standard throughout.