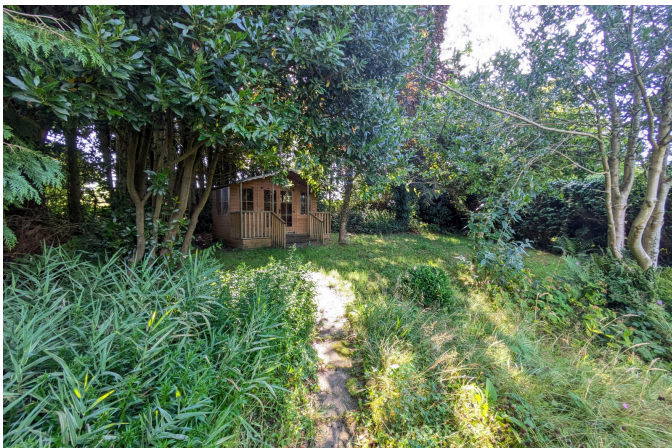


Trefinnick Road, Bray Shop, PL17.

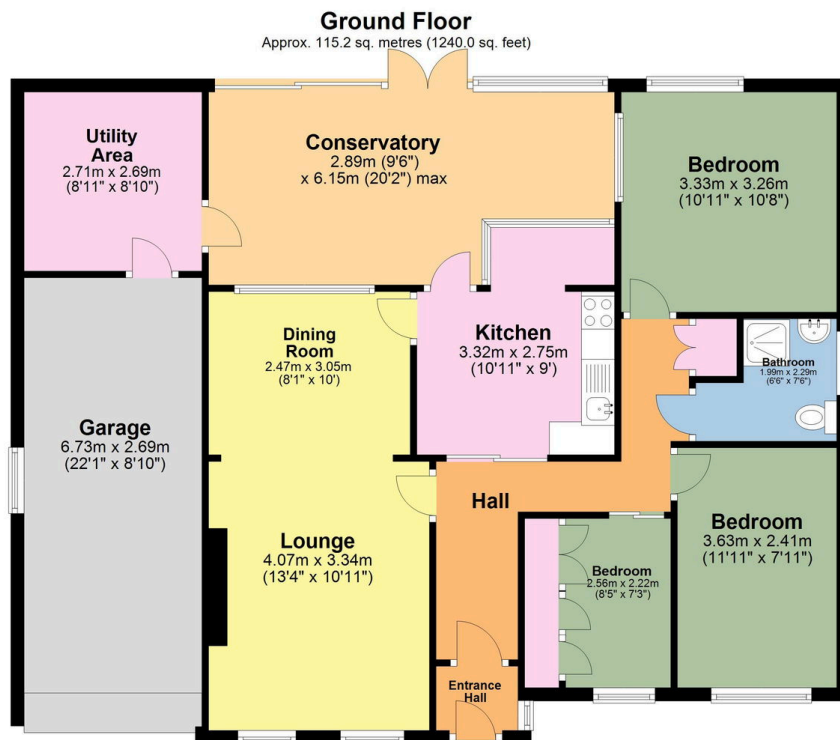
Offers In Region Of £345,000

3 1 1





- Detached bungalow
- 3 bedrooms
- Through lounge/dining room
- Utility Room
- Large single garage + driveway parking + inspection pit
- Very large rear garden
- Family Bathroom
- Garden Room
- Two summerhouses, greenhouses and shed
- Countryside location



Total area: approx. 115.2 sq. metres (1240.0 sq. feet)

These are appropriate dimensions.
Plan produced using PlanUp.

This delightful 3 bedroom bungalow is situated on a quiet country lane in a desirable location on the outskirts of Bray Shop and offers a wonderful large rear garden. The accommodation briefly comprises of 3 bedrooms, a through Lounge/Dining room, Family Bathroom, Kitchen, Utility Room and a Garden Room that overlooks the patio and garden. The large gardens are divided into a landscaped rockery and patio close to the house, a lawned area with mature shrub borders and a further garden area with a Summerhouse/Office. The property also offers a large garage



with an inspection pit, parking for several vehicles and lawned front garden with mature trees and shrubs. A great location!