



ALISON MCCAREY POWERED BY **exp**™ UK

@ alison.mccarey@exp.uk.com

alisonmccarey.exp.uk.com

07506 730 460

# Hatherleigh Close Bognor Regis West Sussex

Offers In Region Of £340,000

3 2 1



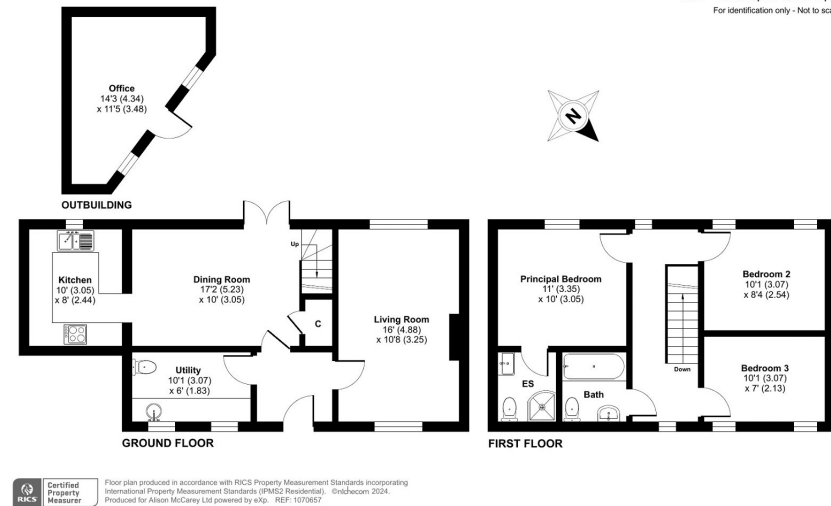
- Quiet residential cul de sac
- South facing rear garden
- Brick paved driveway for 3 cars
- Garden office/studio with power and light
- Close to good local shopping, bus services & schools
- Integrated premium AEG double oven & gas hob, fridge freezer & dishwasher
- Open plan kitchen/diner with breakfast bar
- Utility room with sink and plumbing for washing/drying machines
- Outside taps to front and rear gardens
- Storm porch with outside light



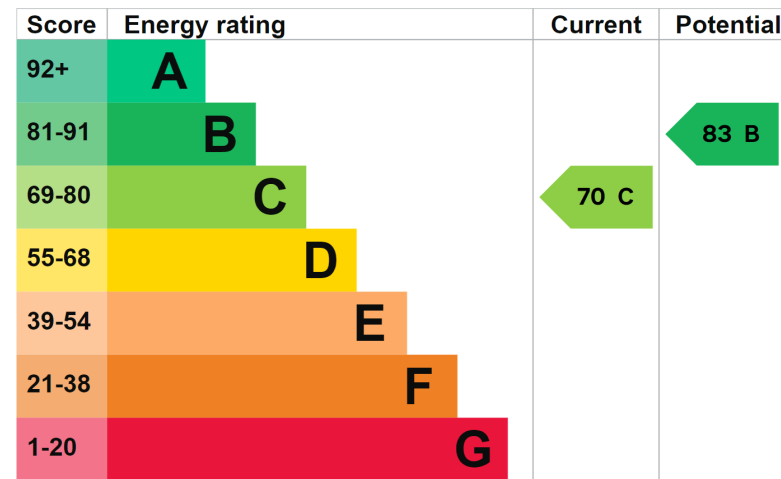


### Hatherleigh Close, Bognor Regis, PO21

Approximate Area = 1018 sq ft / 94.5 sq m  
 Outbuilding = 117 sq ft / 10.8 sq m  
 Total = 1135 sq ft / 105.3 sq m  
 For identification only - Not to scale



We are pleased to offer this lovely three bed semi detached family home in the popular North Bersted region of Bognor Regis West Sussex.



The graph shows this property's current and potential energy rating.

eXp World UK Ltd is a registered company at Level 37, 25 Canada Square, London, E14 5LQ.

Registered company number is 12016573. VAT Registration Number is 327 4120 29