



ALISON MCCAREY POWERED BY **exp**™ **UK**

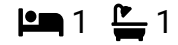
@ alison.mccarey@exp.uk.com

🌐 alisonmccarey.exp.uk.com

☎ 07506 730 460

Bepton Road, Midhurst, GU29 9NB

Guide Price £235,000



A fabulous one bedroom floor apartment in the centre of the popular and historic town of Midhurst West Sussex. With a superb contemporary feel and high specification bathroom and kitchen, this apartment really does offer easy living in a central location.

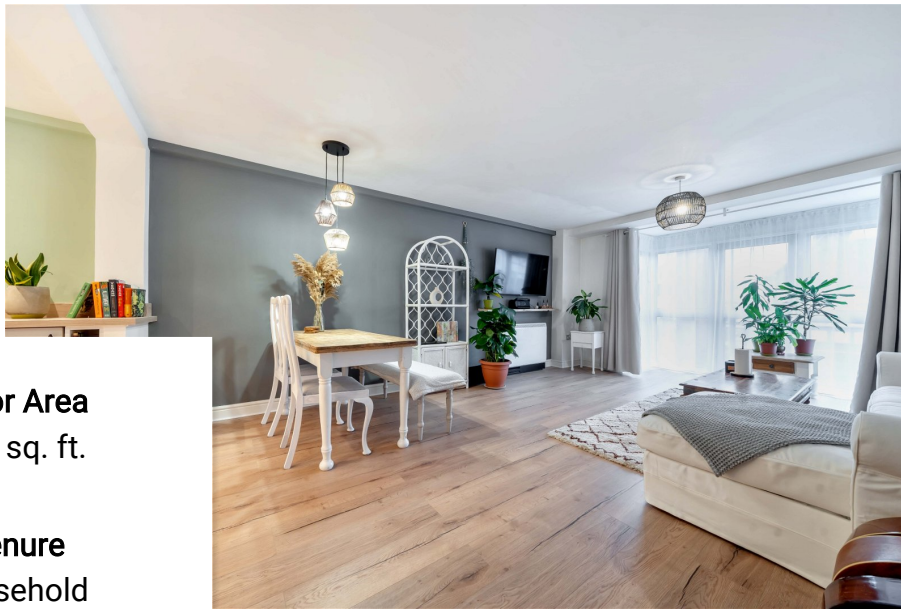
The designer fitted kitchen features hardwood worktops, wooden cabinetry, and high specification appliances such as a Neff oven and hob with Neff Extractor hood. There is warm toned hardwood flooring from the hallway through to the kitchen and dining/living area.

The bathroom features textured tiling floor with underfloor heating and a full sized bath with rain fall shower.

A spacious bedroom with fitted wardrobes offers plenty of room for a workspace as well as large bedroom furniture.

The apartment comes with an allocated off road parking space.



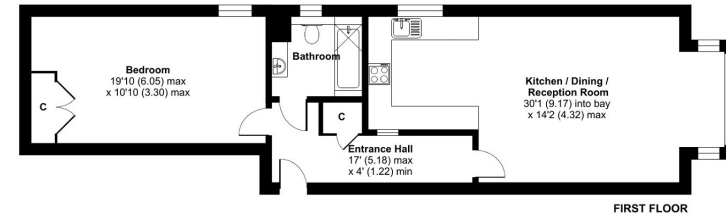


Floor Area
731 sq. ft.

Tenure
Leasehold

Service Charge
£600 per annum

Ground Rent
£ per annum



Floor plan produced in accordance with RICS Property Measurement Standards incorporating International Property Measurement Standards (IPMS Residential). ©voidroom 2023. Produced for Alison McCarey Ltd powered by eXp. REF: 1088516

Score	Energy rating	Current	Potential
92+	A		
81-91	B		
69-80	C		80 C
55-68	D	66 D	
39-54	E		
21-38	F		
1-20	G		

The graph shows this property's current and potential energy rating.