



ALISON MCCAREY POWERED BY **exp** TM UK

@ alison.mccarey@exp.uk.com

🌐 alisonmccarey.exp.uk.com

☎ 07506 730 460

Kings Drive, Midhurst, GU29 0EY

Guide Price £1,075,000

3 2



A luxurious second floor three bedroom apartment offering 1,462 sq ft of glorious single level living and set in the idyllic South Downs National Park at the King Edward VII Estate near Midhurst West Sussex.

With three generous sized double bedrooms, all with french doors opening out onto the south facing terrace balcony with dining area and views onto the gardens and South Downs this property is simply stunning. The principal bedroom features an en suite bathroom and dressing area with bespoke Minotti wardrobes and shoe cabinets

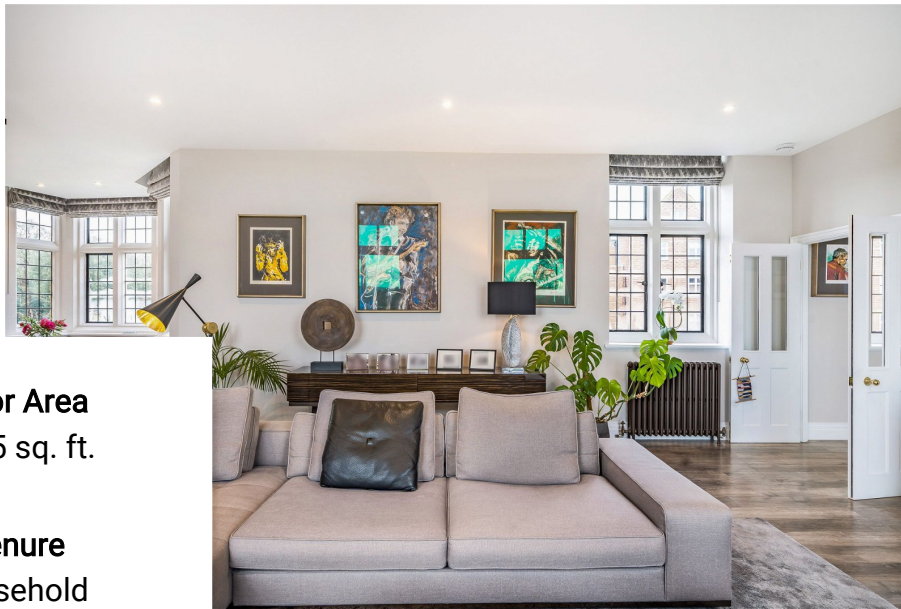
A sleek modern kitchen featuring quartz worktops, bespoke wooden cabinetry, quooker tap and premium integrated appliances is adjacent to a light filled dining area with stunning views to the listed Chapel and internal Edwardian gardens.

The apartment comes with two underground secure car parking spaces with the entrance close by to the apartment entrance.



Kings Drive, MIDHURST, GU29

Approximate Area = 1424 sq ft / 132.2 sq m
For identification only - Not to scale

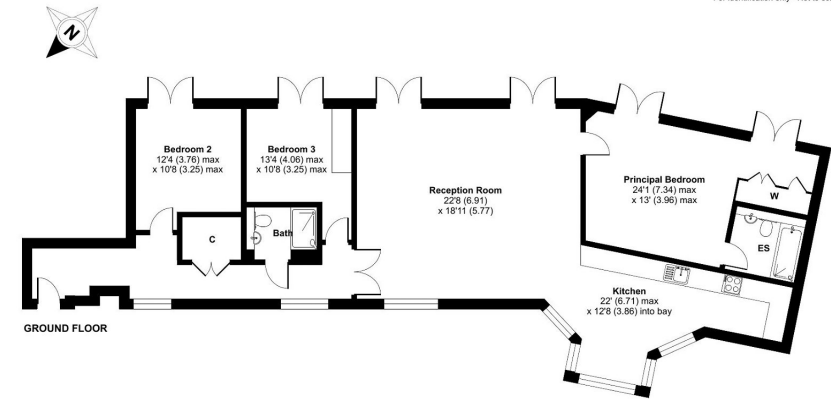


Floor Area
1425 sq. ft.

Tenure
Leasehold

Service Charge
£7284 per annum

Ground Rent
£350 per annum



Certified Property Measurer Floor plan produced in accordance with RICS Property Measurement Standards incorporating International Property Measurement Standards (IPMS Residential). ©vidcom 2023. Produced for Alison McCarey Ltd powered by eXp. REF: 1064276