

## King Edward VII Apartments, Midhurst , West Sussex

Offers Over £495,000

🛏️ 2 🍽️ 2 🛋️ 1



- Stunning Views over South Downs
- Master with en-suite and dressing room
- Generous Storage
- Spacious bathroom
- Open plan living space
- Designer Kitchen with Siemens fitted appliances
- Lift access
- Concierge service
- 2 Allocated parking spaces
- Use of indoor heated pool & steam room/ gym

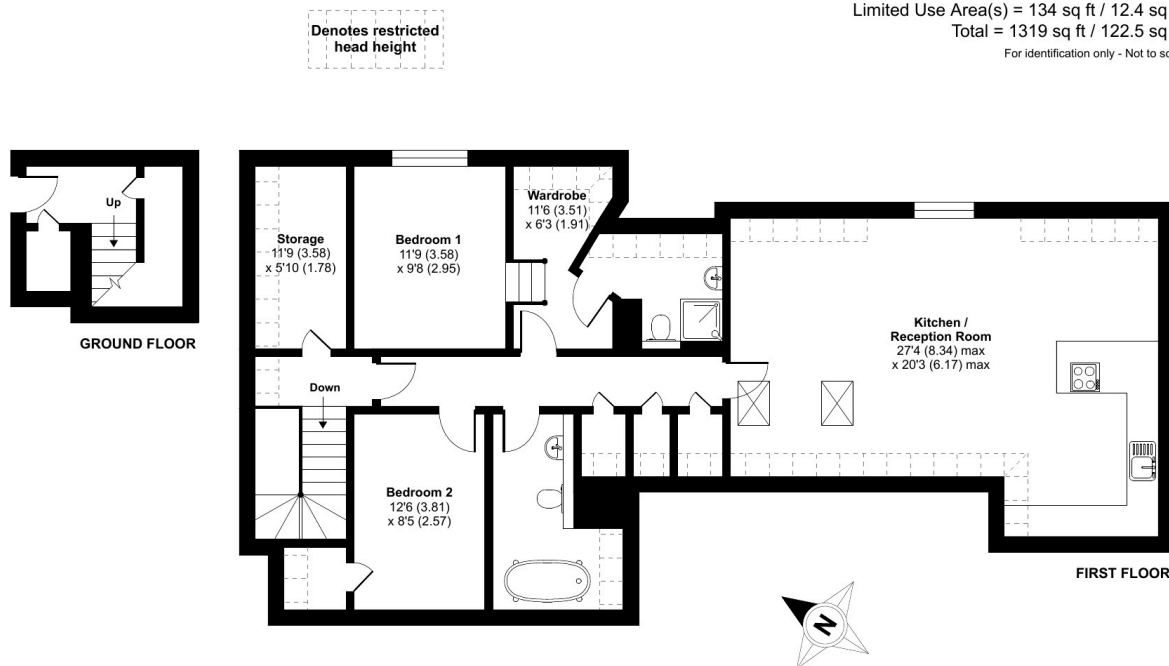
### Kings Drive, Midhurst, GU29

Approximate Area = 1185 sq ft / 110.1 sq m

Limited Use Area(s) = 134 sq ft / 12.4 sq m

Total = 1319 sq ft / 122.5 sq m

For identification only - Not to scale



Floor plan produced in accordance with RICS Property Measurement Standards incorporating International Property Measurement Standards (IPMS2 Residential). © nitchcom 2023. Produced for Alison McCarey Ltd powered by eXp. REF: 947871

A fantastic opportunity to acquire a modern, light and spacious two bedroom apartment with stunning views over the South Downs.

This contemporary immaculately presented apartment takes up an elevated, private and central position directly overlooking the main south facing gardens and benefiting from plentiful storage throughout.

The open plan living/dining/kitchen offers ample room to entertain and relax as well as separate areas for study and home working. With bespoke hand painted cabinets and Siemens integrated appliances the kitchen boasts plenty of worktops and storage areas.

There are two double bedrooms, the master boasting an en-suite and separate dressing area and a spacious main bathroom with travertine tiling and a free standing bath.

A viewing is a must to appreciate the contemporary elegance and special architectural features of this superb apartment and the surrounding estate. AM0249