

Worcester Road, Oldbury, B68 0HX

Offers In Region Of £200,000

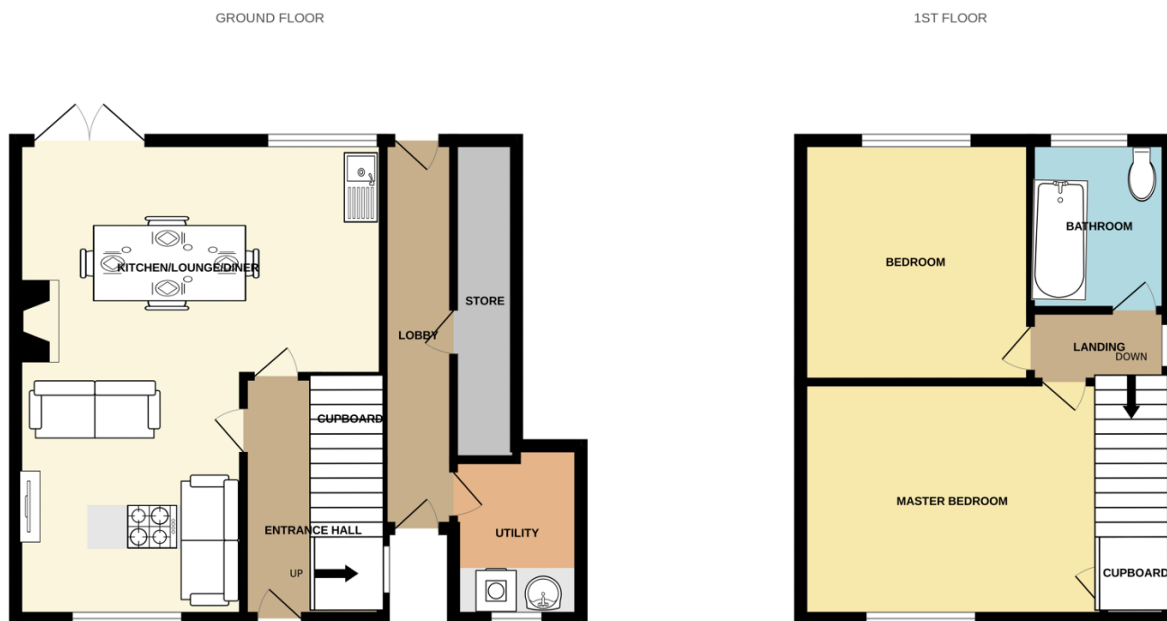
2 1 1



Please quote ref AT0132 An exceptional semi detached home with stunning open plan living space. Perfect for first time buyers!

Key Features

- Please quote ref AT0132
- NO UPWARD CHAIN
- Council tax band A
- Perfect for first time buyers
- Walking distance to a coop
- An incredible high standard semi detached home with stunning open plan living
- Lovely quiet road next to a golf course
- Separate utility area & useful side passage
- Very accessible to bus routes & the Wolverhampton Road
- Beautifully refurbished throughout



Whilst every attempt has been made to ensure the accuracy of the floorplan contained here, measurements of doors, windows, rooms and any other items are approximate and no responsibility is taken for any error, omission or mis-statement. This plan is for illustrative purposes only and should be used as such by any prospective purchaser. The services, systems and appliances shown have not been tested and no guarantee as to their operability or efficiency can be given.
Made with Metropix ©2024