

## Shipton Close, Dudley, DY1 2GE

Offers In Region Of £360,000

4 2 2

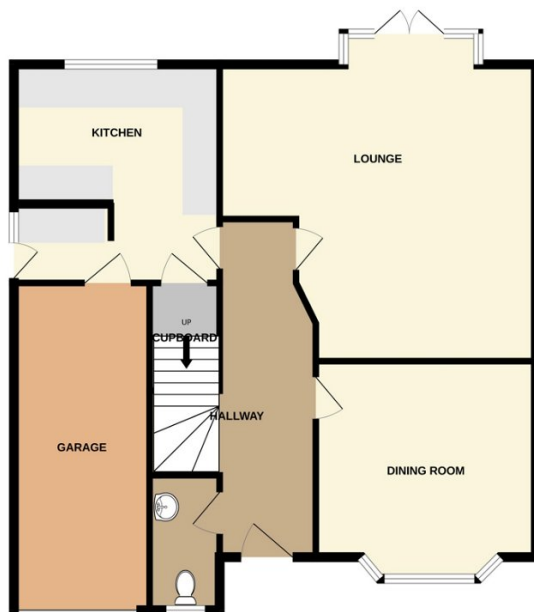


Please quote ref AT0132 - A most stunning, immaculate four double bedroom home with a south facing garden, on one of the most desired estates where properties do not come up for sale often.

## Key Features

- Four very generous bedrooms
- Very well sought after estate
- Ensuite to master & downstairs cloakroom
- South facing garden
- Large lounge & separate dining room
- Separate utility area & internal access to garage
- Beautiful immaculate condition
- Bosch kitchen appliances
- A host of local amenities close by
- Please quote ref AT0132

GROUND FLOOR



1ST FLOOR



Whilst every attempt has been made to ensure the accuracy of the floorplan contained here, measurements of doors, windows, rooms and any other items are approximate and no responsibility is taken for any error, omission or mis-statement. This plan is for illustrative purposes only and should be used as such by any prospective purchaser. The services, systems and appliances shown have not been tested and no guarantee as to their operability or efficiency can be given.  
 Made with Metropix ©2023