



Meadowcroft Road, Outwood, Wakefield, West Yorkshire, WF1 3TA

Guide Price £430,000

POWERED BY
GLEN COOPER **exp** **UK**

@ glen.cooper@exp.uk.com

glencooper.exp.uk.com

📞 07757 692 458

Meadowcroft Road, Outwood, Wakefield, West Yorkshire, WF1 3TA

How's the summer hols going ? need more family space ? then this beauty is well worth a look Fantastic 5 bed 4 bath detached family home set in a quiet part of Outwood. Great accommodation for family living + entertaining internally and externally. Set over three floors this modern home has everything you and your family need from the large lounge dining room through to the spacious orangery with its light bright and attractive living space leading to an enclosed rear garden ideal for the kids and pets to play safely + offering a barbecue potential of biblical proportions. The fitted kitchen/diner is modern, spacious with integral equipment and a breakfast bar. If you need an office it's got one of those as well. one there are four double bedrooms plus a family bathroom on 1st floor The whole of the 2nd floor is given to mum and dads kingdom huge bedroom space with en suite and a dressing room. Phenomenal amount of property and space for the money. **.GC0175**





Lounge

5.18m x 3.51m (16'11" x 11'6")

Great living, family and entertainment space

Dining Area

3.5m x 2.5m (11'5" x 8'2")

Family meals and entertaining guests this room is great for both

3.9m x 3.3m (12'9" x 10'9")

L Shaped modern attractive kitchen with fitted units and cooker / hob and breakfast bar. Its spacious and light and has all you need for family meals and special occasions





Orangery

6.2m x 3.7m (20'4" x 12'1")

Superbly modern design and a brilliant space for all the family the patio doors lead to the enclosed rear garden and all the entertainment and living space you need.

Study

5m x 2.31m (16'4" x 7'6")

Currently set up as an office this spacious light and bright room has dual aspect windows which allow loads of light to flood in.



Bedroom 2

3.5m x 2.6m (11'5" x 8'6")

Excellent double bedroom overlooking the front of the house has the real bonus of an en suite with Shower Wc and sink.

Bedroom 3

3.5m x 2.6m (11'5" x 8'6")

Cracking light bright double bedroom with fitted wardrobe.



Bedroom 4

3m x 2.8m (9'10" x 9'2")

Another light bright room overlooking rear of the property

Bedroom 5

3m x 2.6m (9'10" x 8'6")

Final bedroom on the first floor light bright and airy

Family Bathroom

Attractively decorated and tiled this modern bathroom has a large bath plus the usual Wc and sink. Fancy a soak then this is the room your looking for.





Master Suite

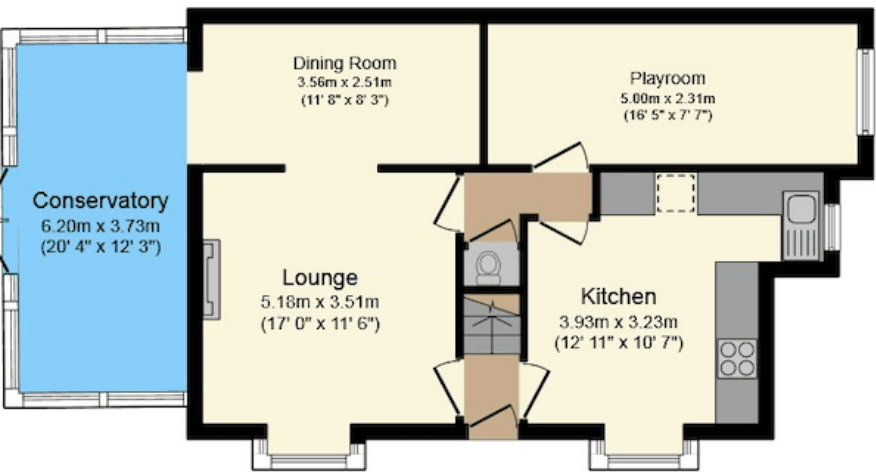
6.2m x 4.6m (20'4" x 15'1")

Spread across the whole width of the top floor this superb escape pod from family life and daily stress you have in addition a great open en suite plus a superb dressing room

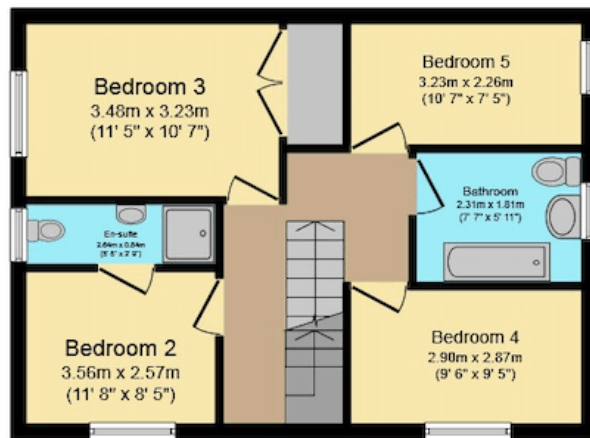
Master En Suite

3.1m x 2.8m (10'2" x 9'2")

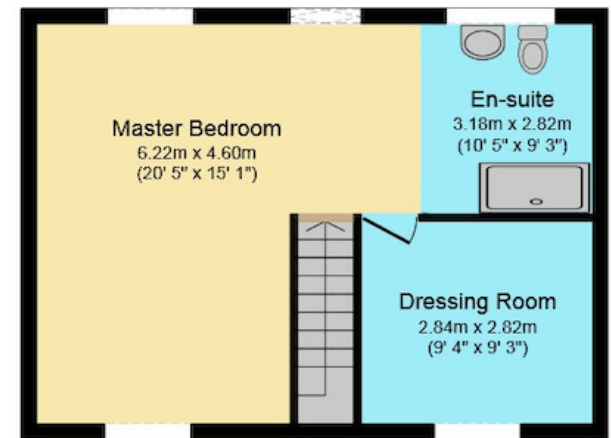
A superbly designed and furnished en suite



Ground Floor



First Floor



Second Floor