



MILLINGTON TUNNICLIFF

www.millingtontunncliff.co.uk

Outcrop Road, Plymouth, PL9 9FR

£435,000

4 2 2



A modern 4 bedroom detached house set within this sought after cul de sac on the doorstep of Hooe Lake and Turnchapel, perfect for the water sport enthusiast. The property is immaculately presented and offers an entrance hall, cloakroom, living room, utility and part integrated kitchen/diner on the ground floor, together with the 4 bedrooms, family bathroom and en suite shower on the upper floor. The house is Upvc double glazed, gas centrally heated, has a private drive to the garage and level enclosed rear garden. EPC B 81.

01752 896020 | info@millingtontunncliff.co.uk | 19 Fore Street, Ivybridge, Devon, PL21 9AB



MILLINGTON TUNNICLIFF

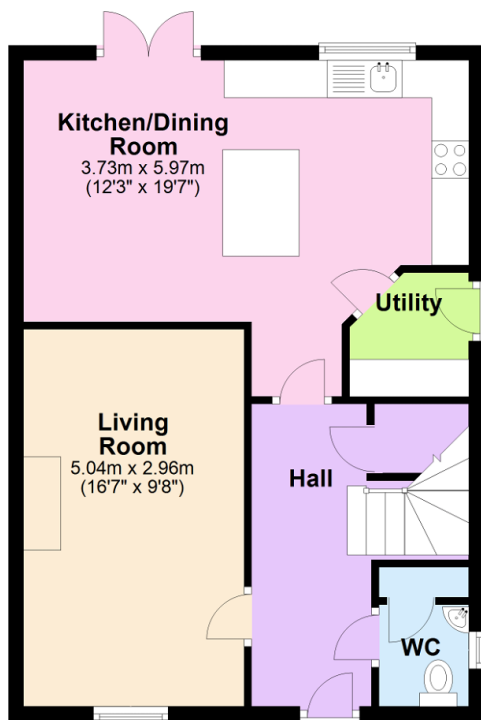
www.millingtontunncliff.co.uk

Key Features

- Modern 4 Bedroom Detached House
- Popular Cul De Sac On Doorstep of Hooe Lake And Turnchapel Village
- Upvc Double Glazing
- Gas Central Heating
- Immaculately Presented
- En Suite Shower/WC
- Utility Room
- Private Driveway And Single Garage
- Enclosed Level Rear Garden
- EPC B 81

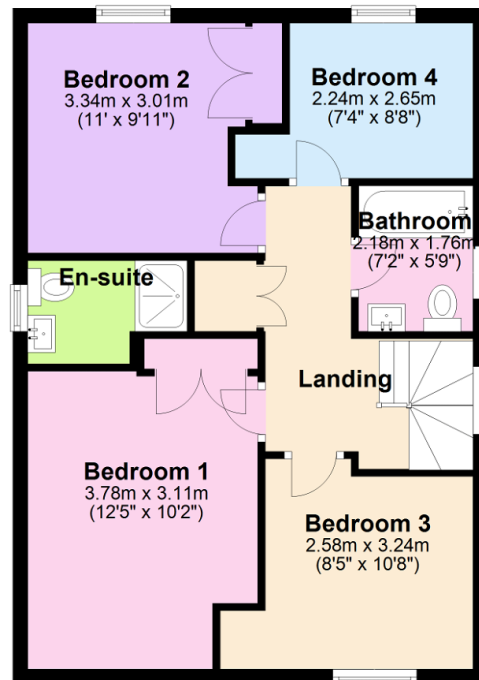
Ground Floor

Approx. 51.6 sq. metres (555.4 sq. feet)



First Floor

Approx. 58.8 sq. metres (632.9 sq. feet)



Total area: approx. 110.4 sq. metres (1188.2 sq. feet)

01752 896020 | info@millingtontunncliff.co.uk | 19 Fore Street, Ivybridge, Devon, PL21 9AB