




Savery Close, Ivybridge, PL21 0JR

£395,000

 4  1  2



A brick built 4 bedroom detached house tucked in at the end of this popular cul de sac on the eastern side of Ivybridge, convenient for local schooling. The house sits on a feature corner plot with level south and westerly facing rear garden. The house offers an entrance porch, hallway, cloakroom, living room and kitchen/diner on the ground floor, together with 4 bedrooms and shower room on the upper floor. The house is Upvc double glazed, gas centrally heated and has energy producing PV panels. Externally there is a driveway to the garage and the aforementioned garden. EPC B 83.



MILLINGTON TUNNICLIFF

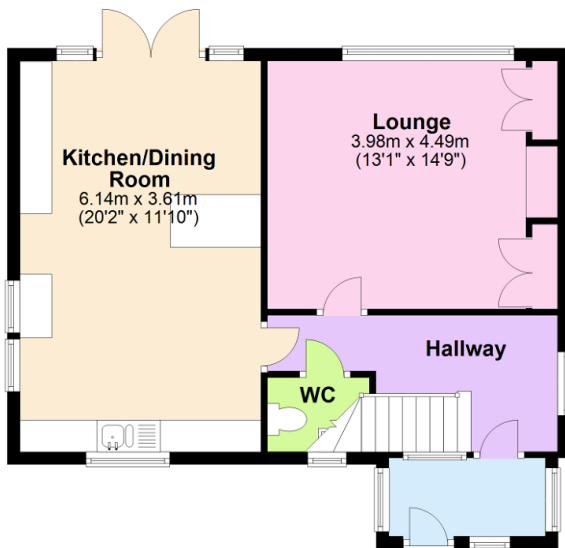
www.millingtontunncliff.co.uk

Key Features

- 4 Bedroom Detached House
- Spacious Living With Feature Fireplace And Wood Burner
- Cloakroom With Feature Penny Clad Resin Flooring
- Gas Central Heating
- Convenient For Primary And Secondary Schooling
- Feature Corner Plot With South and Westerly Facing Rear Garden.
- Modern Fitted Kitchen
- Upvc Double Glazing
- Garage And Driveway
- Energy Producing PV Panels

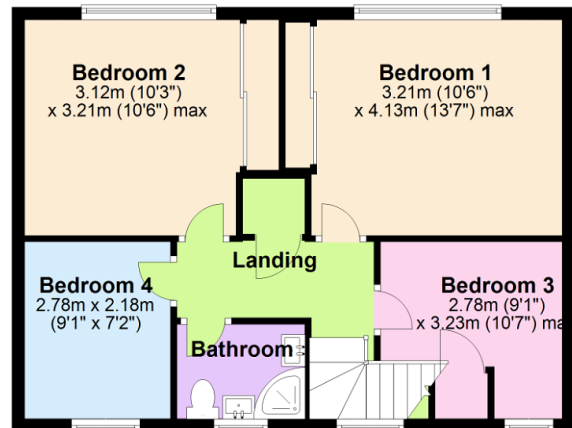
Ground Floor

Approx. 56.7 sq. metres (610.0 sq. feet)



First Floor

Approx. 52.7 sq. metres (567.7 sq. feet)



Total area: approx. 109.4 sq. metres (1177.7 sq. feet)

01752 896020 | info@millingtontunncliff.co.uk | 19 Fore Street, Ivybridge, Devon, PL21 9AB