


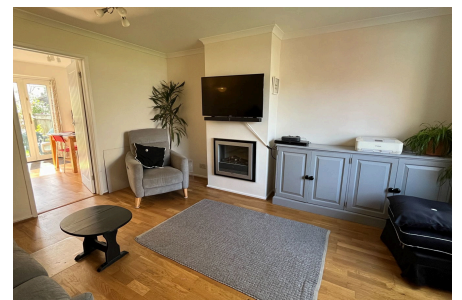




Greenfield Drive, Ivybridge, PL21 0UG

Offers Over £270,000

 3  1  1



Located in the sought after area of The Paddocks within Ivybridge, you will find this three bedroom semi detached home in a tucked away position. Located within close walking distance of local shops and amenities, the property offers accommodation comprising; entrance hallway, lounge, kitchen/diner, three bedrooms and family bathroom. Externally there is an attractive southerly facing rear garden and ample driveway parking to the front. Book your viewing slot now to avoid disappointment. EPC C 70.



MILLINGTON TUNNICLIFF

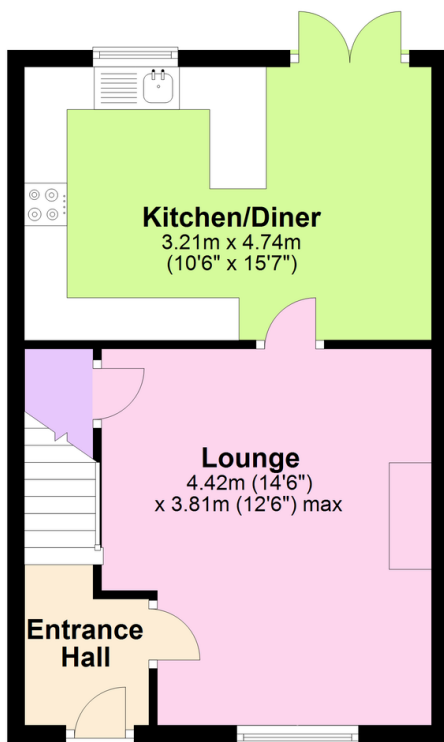
www.millingtontunncliff.co.uk

Key Features

- Three Bedroom Semi Detached Home In Favourable Location
- Modern Kitchen/Diner
- Bathroom
- Driveway Parking For Several Vehicles
- Gas Central Heating & Double Glazing
- Lounge
- Three Bedroom (Two Doubles & One Single)
- Enclosed Southerly Facing Rear Garden
- Close Walking Distance To The Town And Local Amenities
- Early Viewing Essential

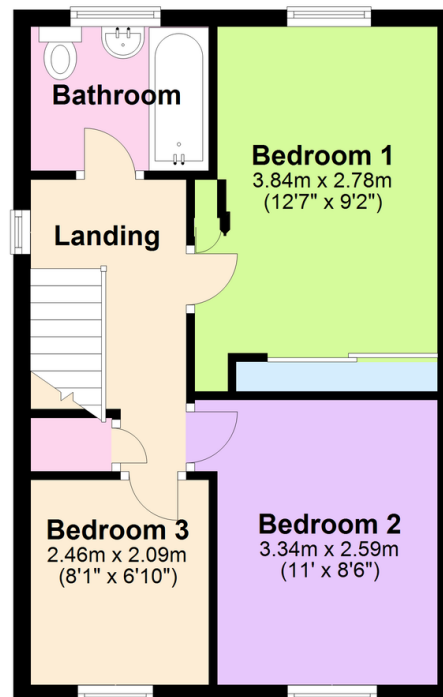
Ground Floor

Approx. 36.7 sq. metres (395.3 sq. feet)



First Floor

Approx. 36.9 sq. metres (396.7 sq. feet)



Total area: approx. 73.6 sq. metres (791.9 sq. feet)

01752 896020 | info@millingtontunncliff.co.uk | 19 Fore Street, Ivybridge, Devon, PL21 9AB