






MILLINGTON TUNNICLIFF

www.millingtontunncliff.co.uk

Holtwood Drive, Ivybridge

Guide Price £360,000

 4  2  2



A Clarke built 4 bedroom detached house set within this popular cul de sac on the western side of Ivybridge. The house offers an entrance porch, hallway, cloakroom, living room, dining room and kitchen on the ground floor, together with 4 double bedrooms, family bathroom and en suite shower room on the upper floor. The house is Upvc double glazed, gas centrally heated, has level gardens, an integral garage and insulated summerhouse. No Chain. EPC D 67.

01752 896020 | info@millingtontunncliff.co.uk | 19 Fore Street, Ivybridge, Devon, PL21 9AB

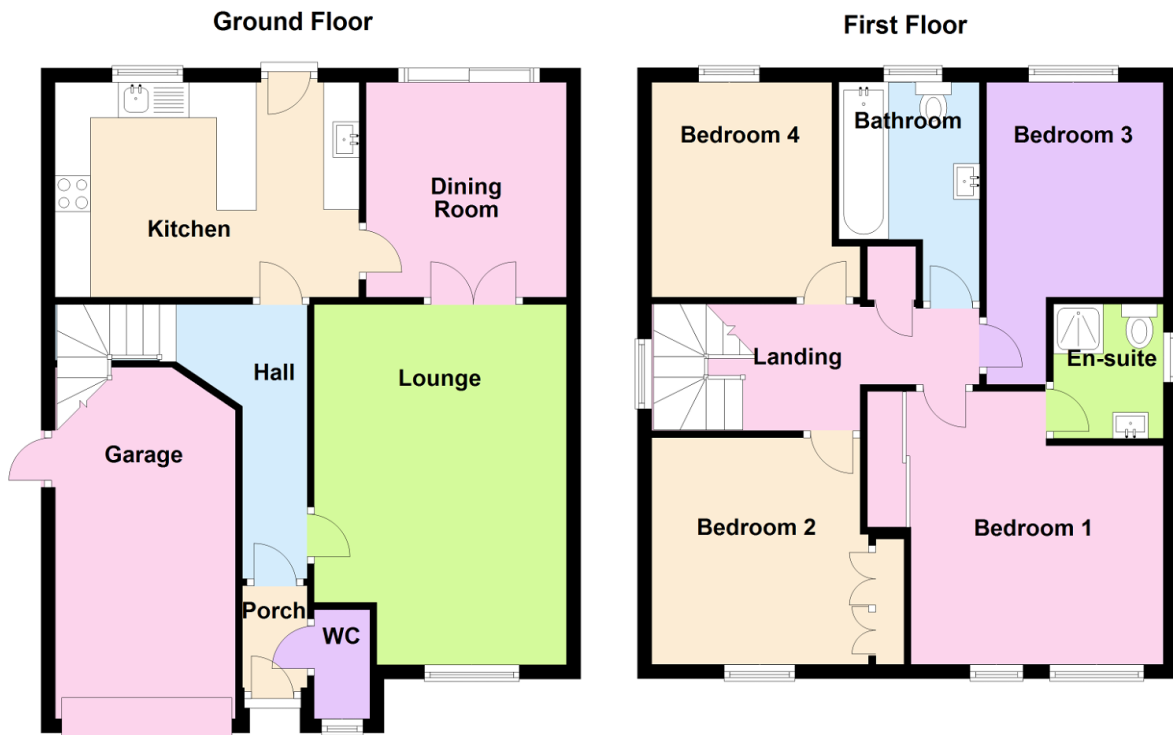


MILLINGTON TUNNICLIFF

www.millingtontunncliff.co.uk

Key Features

- 4 Bedroom Detached House
- En Suite Shower
- Cloakroom
- Gas Central Heating
- Cul de Sac Location
- Level Gardens
- Insulated Summerhouse
- Upvc Double Glazing
- Driveway
- No Onward Chain



01752 896020 | info@millingtontunncliff.co.uk | 19 Fore Street, Ivybridge, Devon, PL21 9AB