



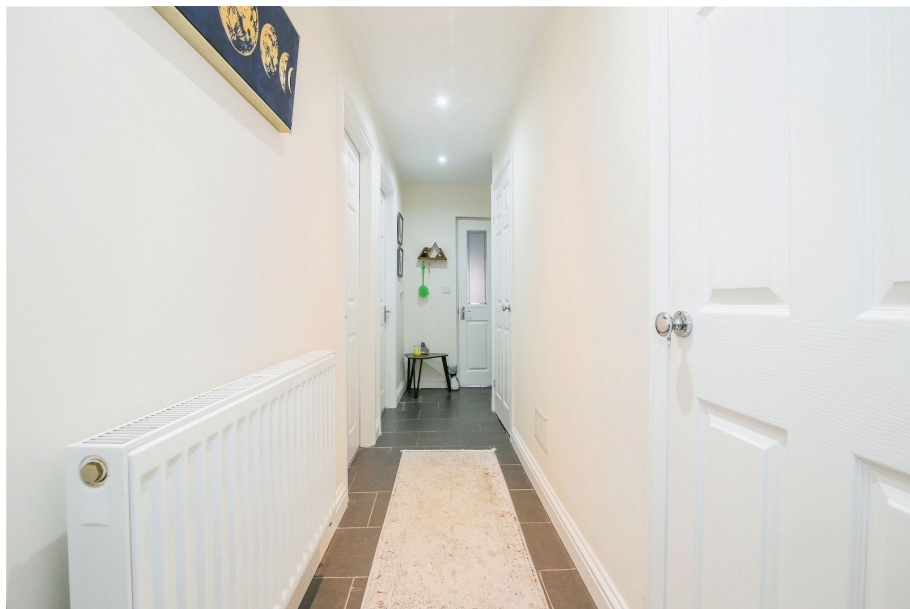
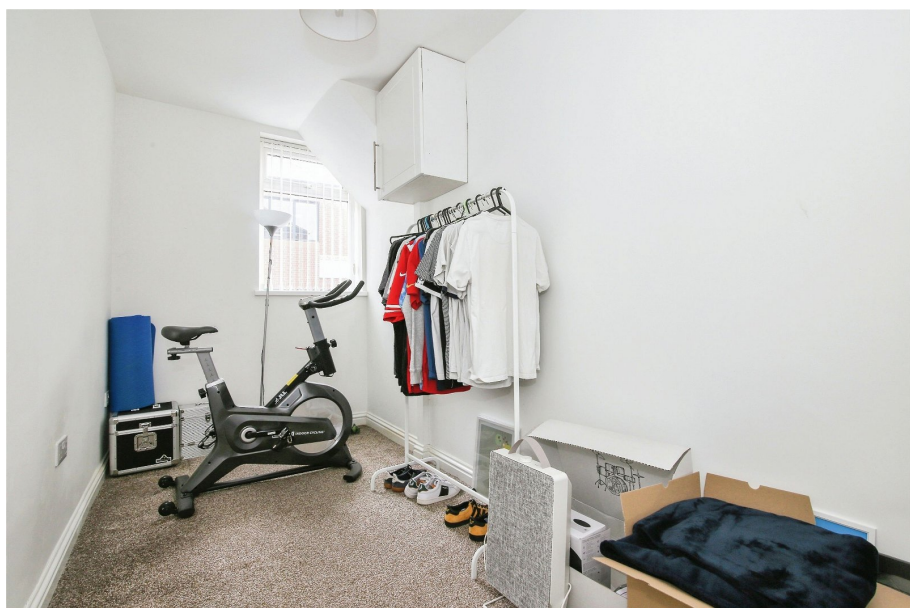
64a Rothesay Terrace

Offers Over £55,000

🛏️ 2 🚿 1 🪑 1



- Ground Floor Garden Flat
- Two Bedrooms
- Good-Sized Living Room
- Galley-Style Kitchen
- Three-Piece Bathroom
- Well Presented Throughout
- Courtyard Garden
- Own Front Door
- Within A Converted Shop
- Close To Local Amenities & Upcoming Rail Links



Introducing this attractive ground floor garden flat with its front door, close to local amenities and within comfortable reach of upcoming rail links to Newcastle.

An ideal first purchase or rental investment, this property benefits from two bedrooms, a spacious front aspect living room as well as a galley-style kitchen & three-piece bathroom to the rear. This property is in great decorative order and offers the new owners direct access to a courtyard garden with gated side access.

With no onward chain, a long lease and a convenient residential location, please get in touch today to arrange a viewing.



Total floor area 60.3 sq.m. (649 sq.ft.) approx

This floor plan is for illustrative purposes only. It is not drawn to scale. Any measurements, floor areas (including any total floor area), openings and orientation are approximate. No details are guaranteed, they cannot be relied upon for any purpose and they do not form part of any agreement. No liability is taken for any error, omission or misstatement. A party must rely upon its own inspection(s). Powered by www.focalagent.com



eXp World UK Ltd is a registered company at Level 37, 25 Canada Square, London, E14 5LQ.

Registered company number is 12016573. VAT Registration Number is 327 4120 29