



111 Rothesay Terrace

Offers Over £210,000

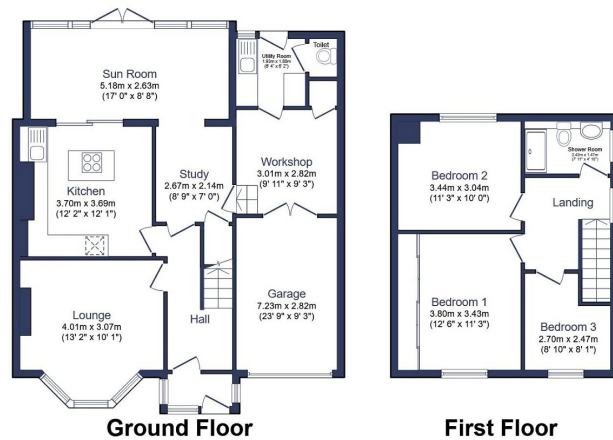
🛏️ 3 🚿 1 🛋️ 2



- Semi-Detached Home
- Ample Reception Space, Including A Study Area
- Modern Kitchen/Breakfast Room
- Very Well Presented Throughout
- An Awesome Rear Garden
- Three Bedrooms
- Extended Sun Room To The Rear
- Downstairs WC & Utility Room
- Garage, Workshop & Double Driveway
- Well Located For Amenities & Local Schooling



An attractive three bedroom semi-detached home that's been updated in recently to include a modern-kitchen breakfast room as well as an extended sun room to the rear, offering views of the spectacular rear garden that backs Gallagher Park. Well presented throughout, this home has a great deal of space to offer with a front aspect living/dining room, a study space on approach to the sun room as well as an abundance of space behind the garage that includes a utility room, a WC, as well as a workshop space, ample storage provisions, and a double driveway to the front. Upstairs there are three well proportioned bedrooms and a good-sized modern walk-in shower room that completes the internal accommodation. When it comes to finding your next family home, this very well appointed house in a conveniently located address with the an unforgettable garden should be given serious consideration when it comes to planning your next viewing appointment.



Total floor area 127.3 m² (1,370 sq.ft.) approx

This floor plan is for illustrative purposes only. It is not drawn to scale. Any measurements, floor areas (including any total floor area), openings and orientation are approximate. No details are guaranteed, they cannot be relied upon for any purpose and they do not form part of any agreement. No liability is taken for any error, omission or misstatement. A party must rely upon its own inspection(s). Powered by www.focalagent.com



eXp World UK Ltd is a registered company at Level 37, 25 Canada Square, London, E14 5LQ.

Registered company number is 12016573. VAT Registration Number is 327 4120 29