



3 Chichester Grove

Offers Over £180,000

🛏️ 3 🚿 1 🚗 1



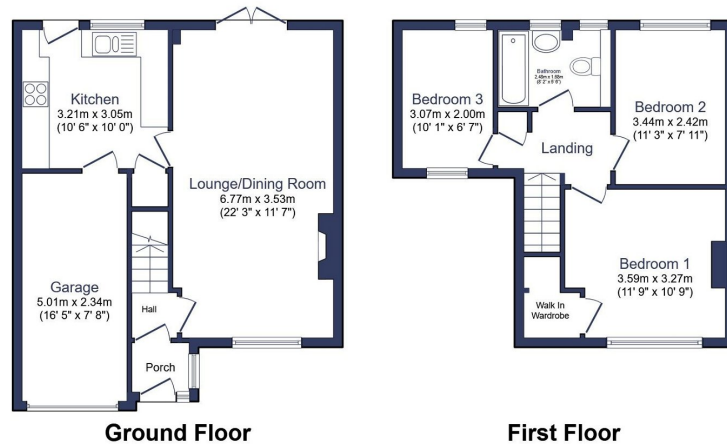
- Semi-Detached Home
- Full Depth Living & Dining Room
- Modern Kitchen With Direct Garden Access
- Integral Garage & Three-Car Driveway
- Three Well Proportioned Bedrooms
- First Floor Bathroom
- Good-Sized West Facing Garden
- Spotlessly Presented Throughout
- Fantastic Residential Location
- No Onward Chain



Tucked away nicely within a peaceful cul-de-sac on The Chesters estate at the top end of Bedlington, this very attractive & flawlessly presented family home is now For Sale.

Offering three bedrooms, an upstairs three-piece family bathroom as well as a full depth lounge/diner (with direct garden access) and a refitted modern kitchen, again offering access to the sizeable West facing rear garden as well as the integral single garage.

We genuinely feel that this a 'turn-key' home with nothing to do on move-in day except decide on the placement of your own furniture. Along with its brilliant location within close proximity of local schools, supermarkets & the Front Street itself, this home has the benefit of a three-car driveway and no onward chain.



Total floor area 89.3 m² (961 sq.ft.) approx

This floor plan is for illustrative purposes only. It is not drawn to scale. Any measurements, floor areas (including any total floor area), openings and orientation are approximate. No details are guaranteed, they cannot be relied upon for any purpose and they do not form part of any agreement. No liability is taken for any error, omission or misstatement. A party must rely upon its own inspection(s). Powered by www.focalagent.com



eXp World UK Ltd is a registered company at Level 37, 25 Canada Square, London, E14 5LQ.

Registered company number is 12016573. VAT Registration Number is 327 4120 29