



5 Spring Ville, East Sleekburn

Offers Over £110,000

🛏️ 2 🚿 1 🛋️ 2

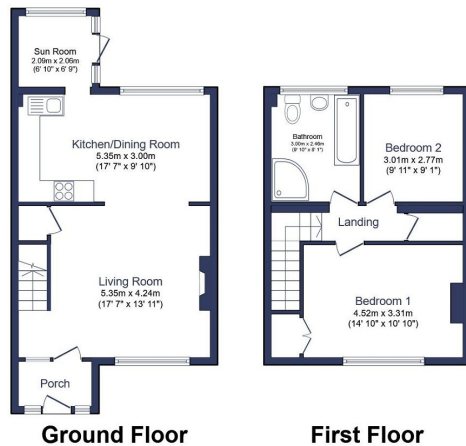


- Mid Terrace Home
- Two Double Bedrooms
- Four-Piece Family Bathroom
- Generous Open Plan Living
- Kitchen/Dining Space
- Sun Room/Home Office Space
- Rear Courtyard Garden
- Enclosed Entrance Porch
- Fantastic Internal Proportions
- Within Close Proximity Of The Beach



Introducing this larger than average two bedroom property within the East Sleekburn locality of Bedlington. Offering over 920sqft of internal space, both bedrooms are doubles, there is a four-piece family bathroom at first floor level and the reception space across the ground floor is incredible for the house type - a large open plan living room leads to a full width kitchen/ breakfast room along with the added benefit of a sun room that could easily double as a home office if need be.

There is small garden to the front beyond the entrance porch with a good-sized enclosed rear courtyard garden with a Westerley aspect. Viewing access is immediate so please get in touch today.



Total floor area 85.9 sq.m. (924 sq.ft.) approx

This floor plan is for illustrative purposes only. It is not drawn to scale. Any measurements, floor areas (including any total floor area), openings and orientation are approximate. No details are guaranteed, they cannot be relied upon for any purpose and they do not form part of any agreement. No liability is taken for any error, omission or misstatement. A party must rely upon its own inspection(s). Powered by www.focalagent.com



eXp World UK Ltd is a registered company at Level 37, 25 Canada Square, London, E14 5LQ.

Registered company number is 12016573. VAT Registration Number is 327 4120 29