



9 Durham Close

POA

🛏️ 3 🚿 2 🛋️ 2



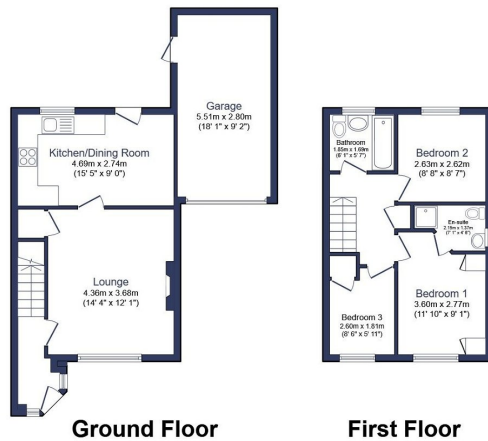
- Semi-Detached Home
- Three Bedrooms
- Family Bathroom & En-Suite Shower Room
- Spacious Front Aspect Living Room
- Full Width Kitchen/Diner
- Good-Sized West Facing Garden
- Multi-Car Driveway & Garage
- Great Decorative Order
- Desirable Estate
- Cul-De-Sac Location



An attractive three bedroom, two bathroom semi-detached home within the ever popular Hazelmere Estate at the top end of Bedlington.

Well presented throughout, this is a well proportioned property with spacious living room & generous full width kitchen/diner that offers direct access to the good-sized West facing rear garden. Key benefits do include an en-suite to the master bedroom, a length private driveway as well as a brick-built attached single garage with side door & power within.

Homes like this rarely stay on the market for long so please reach out today if this ticks your desired move boxes.



Total floor area 84.7 sq.m. (911 sq.ft.) approx

This floor plan is for illustrative purposes only. It is not drawn to scale. Any measurements, floor areas (including any total floor area), openings and orientation are approximate. No details are guaranteed, they cannot be relied upon for any purpose and they do not form part of any agreement. No liability is taken for any error, omission or misstatement. A party must rely upon its own inspection(s). Powered by www.focalagent.com



eXp World UK Ltd is a registered company at Level 37, 25 Canada Square, London, E14 5LQ.

Registered company number is 12016573. VAT Registration Number is 327 4120 29