

The Meadows, Mile Road, Widdrington

Offers Over £550,000

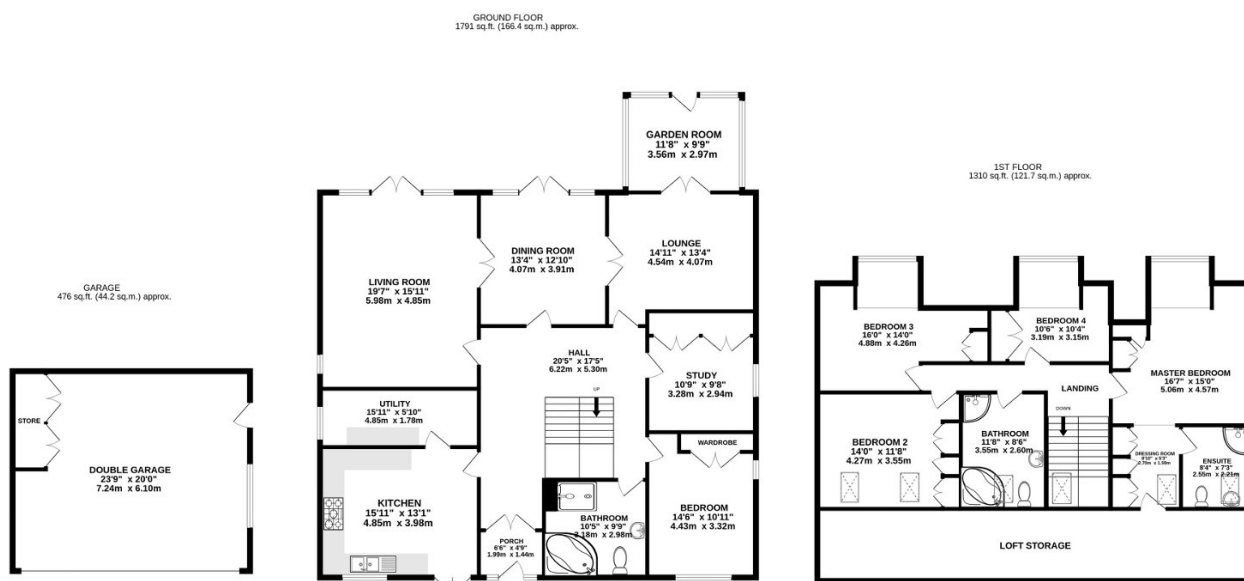
6 3 4



Located at the end of a private driveway, behind a set of double gates, across a multi-car gravel driveway and beyond a detached double garage is this incredible detached family home, occupying a substantial plot, that offers exceptional internal accommodation across two spacious floors.

The attached photos, floor plan and virtual tour grant you full unfiltered access to everything that this magnificent home has to offer, but here's what you can expect to find beyond the front door: five guest bedrooms (one of which is set up as a home office) a master suite with dressing room & en-suite shower room, two further family bathrooms, generous eaves storage that spans the full width of the house, four interconnected reception rooms (all with views of the amazing gardens) a very well appointed kitchen/breakfast room with adjoining utility room, all wrapped around a stunning entrance hall with centre-piece staircase!

- Please Quote Ref: AH0284 For All Enquiries
- Four Inter-Connected Reception Rooms All With Garden Views
- Five Bedrooms + Home Office/6th Bedroom
- Incredible Entrance Hall With Wrap-Around Staircase
- Gated Driveway With Detached Double Garage
- Substantial Detached Residence
- Large Kitchen/Breakfast Room + Separate Utility Room
- Two Family Bathrooms & En-Suite Shower Room
- Breathtaking Gardens & Elevated Patio With Jaw Dropping Views
- Measuring 3577 sqft Internally



TOTAL FLOOR AREA : 3577 sq.ft. (332.3 sq.m.) approx.

Whilst every attempt has been made to ensure the accuracy of the floorplan contained here, measurements of doors, windows, rooms and any other items are approximate and no responsibility is taken for any error, omission or mis-statement. This plan is for illustrative purposes only and should be used as such by any prospective purchaser. The services, systems and appliances shown have not been tested and no guarantee as to their operability or efficiency can be given.

Made with Metropix ©2023