






ALISTAIR HARPER POWERED BY **exp** TM UK

@ alistair.harper@exp.uk.com

 alistairharper.exp.uk.com

 07813 673 606

7 Eagle Close,
Offers Over £220,000

 4  2  2

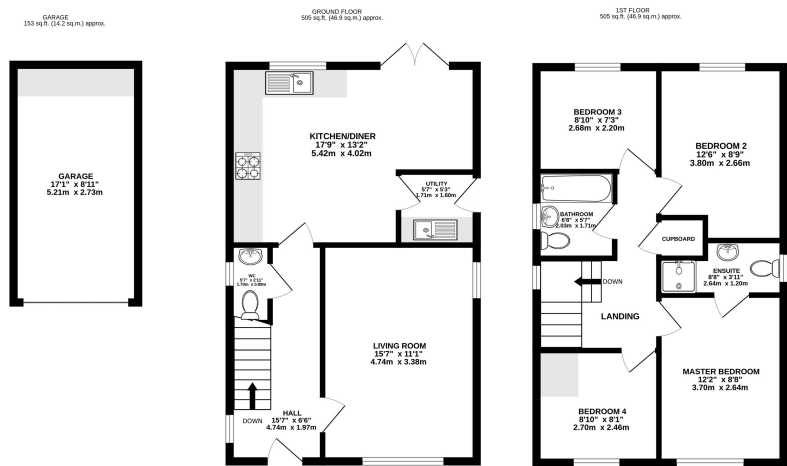


- Please Quote Ref: AH0284 For All Enquiries
- Family Bathroom, En-Suite Shower Room & Downstairs WC
- Separate Utility Room With Side Access
- South Facing Garden With Decked Sun Deck
- Tastefully Presented Throughout
- Detached Four Bedroom Family Home
- Spacious Kitchen/Dining Room
- Attractive Front Aspect Living Room
- Garage & Multi-Car Driveway
- Quiet Cul-De-Sac Location

This modern family home has been beautifully presented & tastefully decorated throughout, offering generous downstairs accommodation that includes a large eat-in kitchen, a separate utility room and downstairs WC.

With four bedrooms, a modern family bathroom plus an ensuite shower room off the master, this is a great option for those families in search of a good-sized home to settle down. Further benefits include the sizeable South facing garden, the detached single garage with long driveway to the front, all within a secluded cul-de-sac location close to local amenities.

Viewing availability is immediate so please get in touch to confirm access arrangements.



TOTAL FLOOR AREA: 1163 sq.ft. (108.1 sq.m.) approx.
Whilst every attempt has been made to ensure the accuracy of the floorplan contained here, measurements of doors, windows, rooms and any other items are approximate and no responsibility is taken for any error, omission or mis-statement. This plan is for illustrative purposes only and should be used as such by any prospective purchaser. The services, systems and appliances shown have not been tested and no guarantee as to their operability or efficiency can be given.
Made with Metropix 6/2023

