



ALISTAIR HARPER POWERED BY **exp**™ UK

@ alistair.harper@exp.uk.com

 alistairharper.exp.uk.com

 07813 673 606

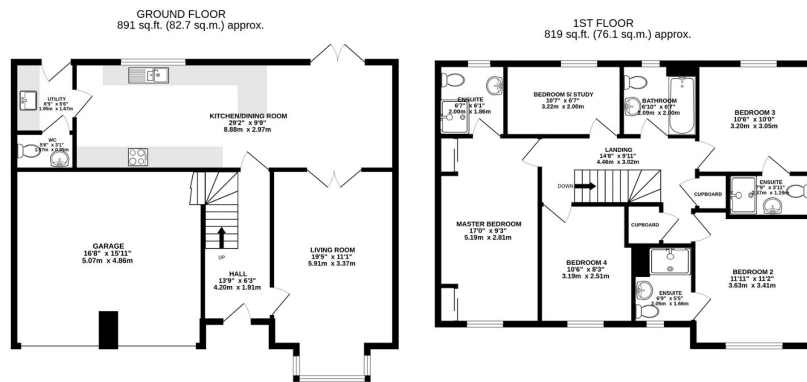
6 St. James Gardens
Offers Over £350,000

🛏️ 5 🚿 3 🚗 2



- Please Quote Ref: AH0284 For All Enquiries
- Beautifully Presented Detached Family Home
- Five Double Bedrooms
- Generous Front Aspect Living Room With Double Doors To Dining Area
- Substantial Open Plan Kitchen/Dining Space Leading To Garden
- Generous Enclosed South Facing Rear Garden
- Family Bathroom & Three En-Suite Shower Rooms
- Utility Room & Downstairs WC
- Double Driveway & Garage
- Overlooking The 20 Acres

Introducing this wonderful family home located within The Acres Estate, offering enviable views to the front onto The 20 Acres. With substantial proportions throughout, those on the lookout for space should not be disappointed - the ground floor features two impressive reception spaces. You'll initially be greeted by a wonderful front aspect living room that opens via double doors to the magnificent open plan kitchen/dining room across the rear of this home. From here you have access to both the utility room/WC space as well as the brilliant South facing garden, large enough to host the biggest of house warming BBQ's. Upstairs you still be carrying your jaw as you find five double bedrooms, a modern family bathroom, plus not one, but three en-suite shower rooms - most family homes don't come this well stacked! Beautifully presented from the front door in, this incredible home also comes with a double garage & a two-car driveway



eXp World UK Ltd is a registered company at Level 37, 25 Canada Square, London, E14 5LQ.

Registered company number is 12016573. VAT Registration Number is 327 4120 29