



ALISTAIR HARPER POWERED BY **exp**™ UK

@ alistair.harper@exp.uk.com

alistairharper.exp.uk.com

📞 07813 673 606

4 Melrose Court

Offers Over £240,000

🛏️ 3 🚿 1 🛋️ 2



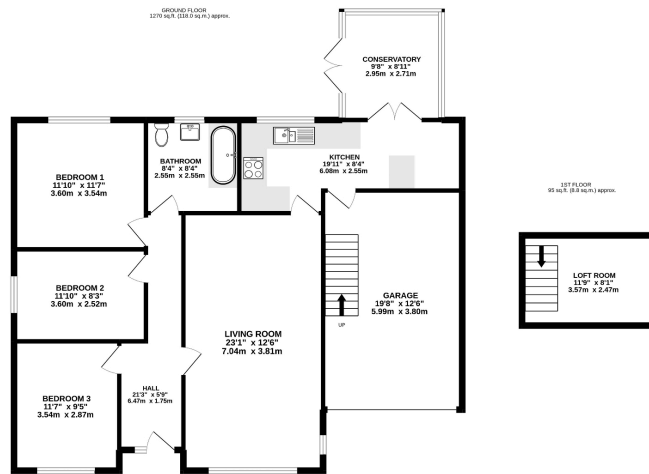
- Please Quote Ref: AH0284 For All Enquiries
- Three Large Bedrooms
- Substantial Reception Room
- Conservatory
- Integrated Garage With Loft Room
- Detached Corner Plot Bungalow
- Spacious Family Bathroom
- Kitchen/Breakfast Room
- South Facing Enclosed Garden
- Very Well Presented Throughout

A substantial detached corner plot bungalow with three spacious bedrooms and one of the largest reception spaces that you are likely to find for the money.

Presented to a surprisingly high standard for a bungalow, the internal proportions are impressive for this home, with a good-sized kitchen/breakfast room to the rear that opens to a South facing conservatory from which you have direct access to a brilliant enclosed garden with gated side access.

Further benefits include a large integrated garage with loft room plus large driveway to front.

Please get in touch if you'd like to see this impressive home for yourself.



TOTAL FLOOR AREA: 1365 sq.ft. (126.6 sq.m) approx.
 Whilst every attempt has been made to ensure the accuracy of the figures contained here, measurements of each bedroom, room and any other parts are approximate and no responsibility is taken for any error, omission or misstatement. This plan is for illustrative purposes only and should be used as such for any prospective purchase. The location, nature and description shown here are not intended as a guarantee as to their quantity or efficiency can be given.
 Made with Hoxpox 02022

