



ALISTAIR HARPER POWERED BY **exp**™ UK

@ [alistair.harper@exp.uk.com](mailto:alistair.harper@exp.uk.com)

[alistairharper.exp.uk.com](http://alistairharper.exp.uk.com)

☎ 07813 673 606

# 18 Milburn Terrace

Offers Over £80,000

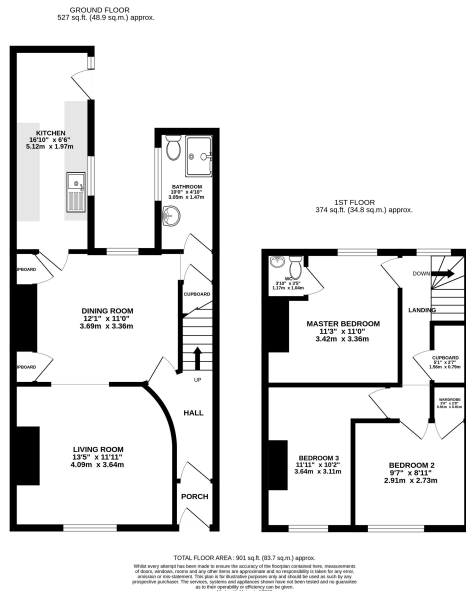
3 1 2



- Please Quote Ref: AH0284 For All Enquiries
- Period Style Of Home
- Open Plan Lounge/Dining Room
- Galley-Style Kitchen
- Large Garden To Rear
- Terraced Home
- Three Bedrooms
- Downstairs Shower Room
- Enclosed Courtyard
- Great First Home or Downsize

An attractive mid terrace home on the outskirts of Stakeford, offering generous proportions with period high ceilings that help create a sense of space throughout. Internally, you'll find an entrance hall that leads into a good-sized double reception with separate dining space. The ground floor accommodation is completed by a lengthy galley-style kitchen & modern shower-room to the rear. There are three bedrooms upstairs with a couple of built in storage cupboards, loft access & an en-suite WC off the main bedroom.

Externally you'll find enclosed front & rear courtyard gardens with the added benefit of a substantial West facing lawned garden to the rear with flower beds & shrubs. The viewing diary is now open and we look forward to introducing you to your next home.



02/02/2024 10:30 Energy performance certificate (EPC) - Flat in energy certificate - G0X1K

Energy performance certificate (EPC)		
18, Millium Terrace CHICHESTER NE16 5UN	Energy rating <b>D</b>	Valid until: 22 July 2028 Certificate number: 2238-2085-7243-4166-0909
Property type	Mid-terrace house	
Total floor area	95 square metres	
<b>Rules on letting this property</b>		
Properties can be let if they have an energy rating from A to E.		
You can read <a href="https://www.gov.uk/guidance/landlords-on-the-requirements-and-exemptions">guidance for landlords on the regulations and exemptions</a> ( <a href="https://www.gov.uk/guidance/landlords-on-the-requirements-and-exemptions">https://www.gov.uk/guidance/landlords-on-the-requirements-and-exemptions</a> ).		

https://find-energy-certificates.gov.uk/energy-certificates/2238-2085-7243-4166-2967/page/2