



ALISTAIR HARPER POWERED BY **exp** TM UK




@ alistair.harper@exp.uk.com

alistairharper.exp.uk.com

☎ 07813 673 606

9 Towers Close

£440,000

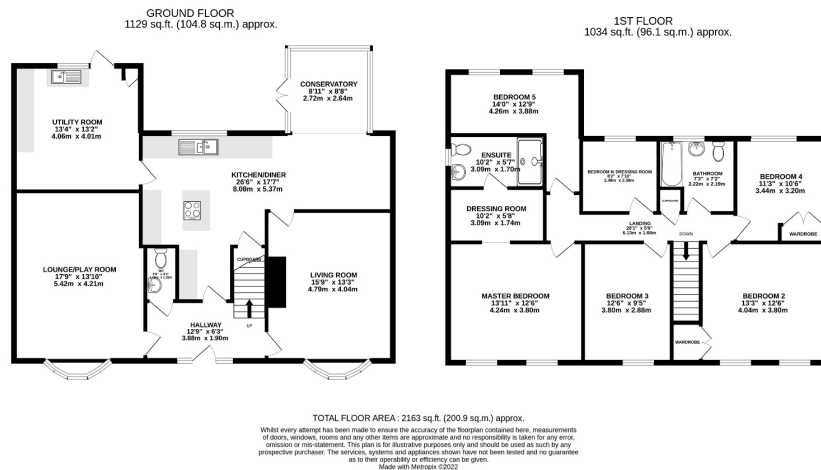
 6  2  3



- Please Quote Ref: AH0284 For All Enquiries
- Five Bedrooms Plus Spacious Master-Suite
- Welcoming Living Room With Dual Access
- Conservatory To Rear
- Multi-Car Driveway
- Considerably Extended Detached Family Home
- Substantial Lounge/Play Room
- Large Open Plan Kitchen/ Diner
- Generous Rear Garden
- Beautifully Presented Throughout

The location of this fully refurbished extended six bedroom, two bathroom, three reception room family is just brilliant. Within reach of the town's principal amenities to the North, some of the area's most desirable open green space to the South as well as being within close proximity of several local schooling options, you'll struggle to find a postcode sector that ticks so many boxes.

Presented beautifully from top to bottom, this home is fully loaded with the added benefits of an oversized utility space (pretty much the size of the original garage), a super-wide enclosed rear garden, multi-car driveway, plus a large entrance hall that sits at the core of the impressive ground floor accommodation. Without arranging an internal viewing, you'll truly struggle to appreciate & understand why this is one of Bedlington's finest family homes.



eXp World UK Ltd is a registered company at Level 37, 25 Canada Square, London, E14 5LQ.

Registered company number is 12016573. VAT Registration Number is 327 4120 29