



ALISTAIR HARPER POWERED BY **exp**™ UK

@ alistair.harper@exp.uk.com

alistairharper.exp.uk.com

📞 07813 673 606

26 Chichester Grove

Offers Over £200,000

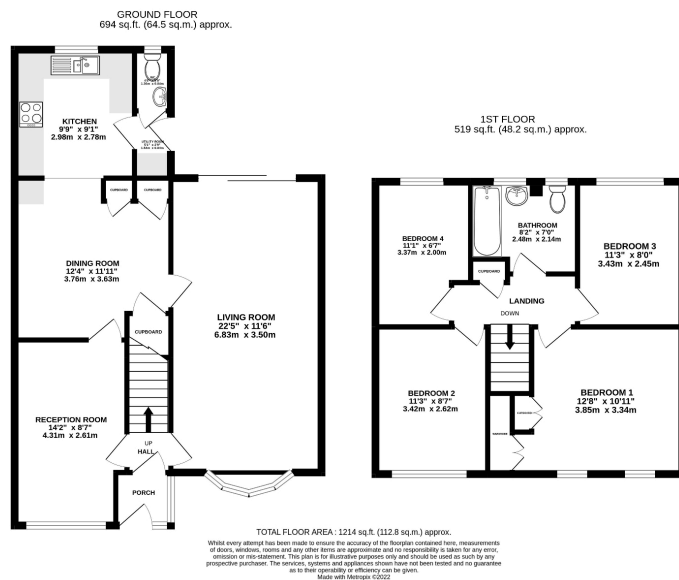
🛏️ 4 🚿 1 🚗 3



- Please Quote Ref: AH0284 For All Enquiries
- Four Bedrooms & Upstairs Family Bathroom
- Extended Kitchen/Dining Room
- Utility Space & WC
- West Facing Rear Garden
- Double Fronted Semi-Detached Family Home
- Substantial Living Space With Direct Garden Access
- 2nd Reception Room - Home Office/5th Bedroom/Play Room
- Single Garage En-Bloc
- Sought After Location

This is bound to be one of the most impressive homes that you'll find for your money today, offered to market with generous proportions throughout. At first floor level you'll find four spacious bedrooms and a sizeable family bathroom, although it's at ground floor level where jaws will drop as you discover the impressive front to back living space, the extended kitchen/diner with utility & WC adjacent plus the bonus second reception to the front that makes for a brilliant home office, play room or 5th bedroom if the need was there.

Located within one of Bedlington's most popular housing spots, this great family home is well presented but leaves plenty of opportunity for you to add your own stamp and create a long term family home for yourself. Further benefits include a single garage en-bloc and a West facing garden for all that afternoon and evening sunshine.



eXp World UK Ltd is a registered company at Level 37, 25 Canada Square, London, E14 5LQ.

Registered company number is 12016573. VAT Registration Number is 327 4120 29