



JON-PAUL BRAMPTON POWERED BY **exp** TM UK

@jon-paul.brampton@exp.uk.com

🌐 jonpaulbrampton.exp.uk.com

📞 07359 015 020



# Moorlands Road, Wing, Buckinghamshire

Offers Over £425,000

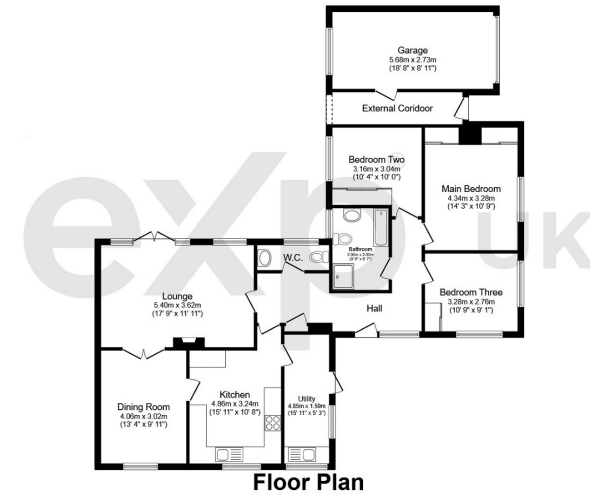
🛏 3 🚿 1 🚗 2



- Detached bungalow of 1400 sq ft!
- Two reception rooms
- Corner plot
- Quiet village location
- No onward chain
- Three bedrooms
- Garage & two driveways!
- Low maintenance South backing garden
- Scope to finish and create your dream home.
- Please quote JB0294 when enquiring through Rightmove or Zoopla



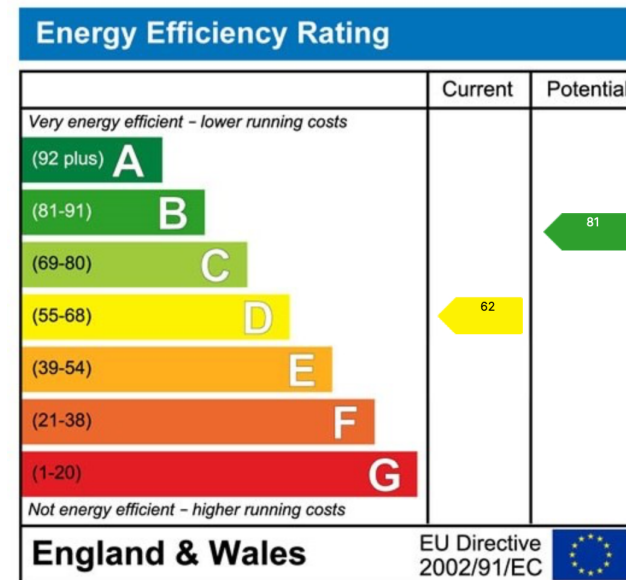




Total floor area 131.3 m<sup>2</sup> (1,413 sq.ft.) approx

This plan is for illustration purposes only and may not be representative of the property. Plan not to scale. Powered by PropertyBox

Jon-Paul Brampton presents...single level living in Wing. This very spacious three bedroom detached bungalow is perfect for downsizers and families alike!



eXp World UK Ltd is a registered company at Level 37, 25 Canada Square, London, E14 5LQ.

Registered company number is 12016573. VAT Registration Number is 327 4120 29