



JON-PAUL BRAMPTON POWERED BY **exp**™ **UK**

@jon-paul.brampton@exp.uk.com

🌐 jonpaulbrampton.exp.uk.com

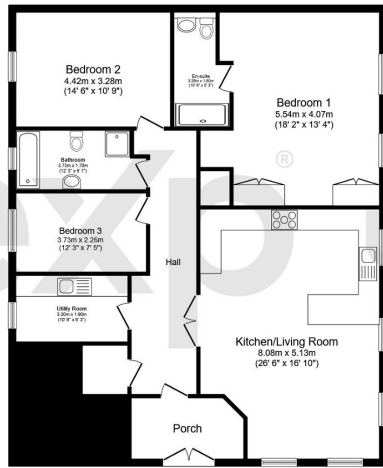
📞 07359 015 020

The Old Chapel, Ivinghoe, Buckinghamshire

Offers Over £550,000

3 2 1





Ground Floor

Total floor area 133.0 sq.m. (1,432 sq.ft.) approx

This plan is for illustration purposes only and may not be representative of the property. Plan not to scale. Powered by PropertyBox



Jon-Paul Brampton presents.....The Old Chapel in idyllic Ivinghoe; An impeccable three bedroom ground floor apartment forming part of a former Chapel built in 1865.

Energy performance certificate (EPC)		
51a, High Street Ivinghoe LEICESTER BUZZARD LE17 9EP	Energy rating B	Valid until: 10 January 2028 Certificate number: 8858-7633-4970-7159-8992
Property type	Ground floor flat	
Total floor area	129 square metres	

Rules on letting this property

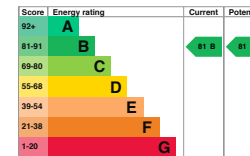
Properties can be let if they have an energy rating from A to E.

You can read [guidance for landlords on the regulations and exemptions](https://www.gov.uk/guidance/domestic-private-rented-property-minimum-energy-efficiency-standards-landlord-guidance) (<https://www.gov.uk/guidance/domestic-private-rented-property-minimum-energy-efficiency-standards-landlord-guidance>).

Energy rating and score

This property's current energy rating is B. It has the potential to be B.

[See how to improve this property's energy efficiency.](#)



The graph shows this property's current and potential energy rating.

Properties get a rating from A (best) to G (worst) and a score. The better the rating and score, the lower your energy bills are likely to be.

For properties in England and Wales:

the average energy rating is D
 the average energy score is 60