

Kingston Avenue, Stony Stratford, MK11

Guide Price £275,000 to £300,000

🛏 3 🚿 1 🚗 2

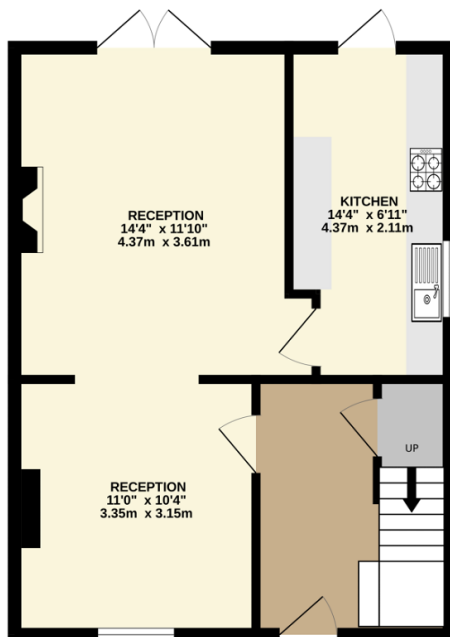


Please quote KM0096 - Well proportioned three bedroom semi detached family home (923 Sq.Ft) with delightful south facing private garden and off street parking, conveniently situated in a quiet cul-de-sac location in sought after Stony Stratford. The property offers bright and spacious, well planned accommodation arranged over two floors, with some further scope for update to suit own taste. Features include a generous double length open plan reception/dining room, well equipped kitchen, upstairs bathroom, gas central heating and double glazing. Externally, the property has recently benefitted from a new roof, and the garden features a home office with power and light, and adjacent storage shed.

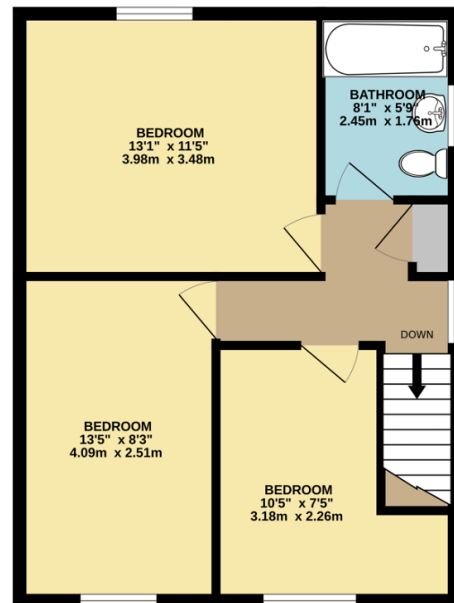
Key Features

- Well Proportioned Three Bedroom Semi Detached House (923 Sq.Ft)
- Some Scope for Upgrade
- Well Equipped Kitchen
- South Facing Private Garden with Home Office
- Close to Local Shops, Schools and Amenities
- Cul-de-Sac Location in Sought After Stony Stratford
- Double Length Through Reception
- Upstairs Bathroom
- Off Street Parking
- Please quote KM0096

GROUND FLOOR



1ST FLOOR



TOTAL FLOOR AREA : 923sq.ft. (85.7 sq.m.) approx.

Whilst every attempt has been made to ensure the accuracy of the floorplan contained here, measurements of doors, windows, rooms and any other items are approximate and no responsibility is taken for any error, omission or mis-statement. This plan is for illustrative purposes only and should be used as such by any prospective purchaser. The services, systems and appliances shown have not been tested and no guarantee as to their operability or efficiency can be given.

Made with Metropix ©2024