

Pound Lane, Preston Bissett, MK18

Offers Over £550,000

🛏️ 4 🚗 2 🛋️ 3

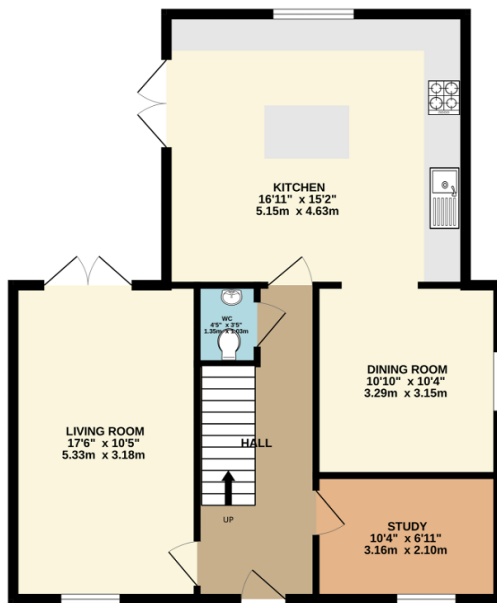


Please quote KM0096 - Stunning four bedroom detached family home with large private garden and driveway for approx. 5/6 cars, enviably situated in a sought after small exclusive development in the heart of Preston Bissett. The property offers well planned and spacious accommodation, superbly appointed throughout with stylish interiors, modern design and high quality finish. Features include an inviting double length reception room, ground floor study, large well equipped kitchen with adjoining dining area, first floor family bathroom with bath and separate shower, master bedroom suite with shower and dressing area, downstairs WC, gas central heating, double glazing, ample inbuilt storage and quality floor coverings.

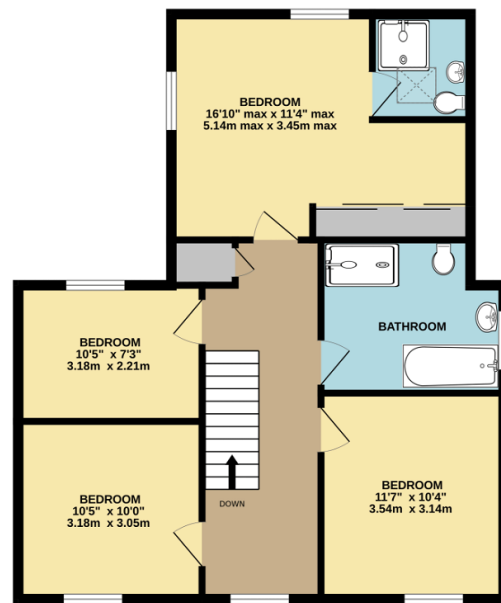
Key Features

- OFFERS OVER £550,000
- Exclusive Development in Village Location
- Large Well Equipped Kitchen with Adjoining Dining Area
- Generous Private Garden
- Easy Access Schools, Amenities and Transport Links
- Stunning Four Bedroom Detached Family Home
- Double Length Dual Aspect Reception Plus Ground Floor Study
- Family Bathroom, Master En-Suite and Guest WC
- Driveway Parking for 5/6 Cars
- Please quote KM0096

GROUND FLOOR



1ST FLOOR



TOTAL FLOOR AREA: 1550sq.ft. (144.0 sq.m.) approx.

Whilst every attempt has been made to ensure the accuracy of the floorplan contained here, measurements of doors, windows, rooms and any other items are approximate and no responsibility is taken for any error, omission or mis-statement. This plan is for illustrative purposes only and should be used as such by any prospective purchaser. The services, systems and appliances shown have not been tested and no guarantee as to their operability or efficiency can be given.

Made with Metropix ©2023