

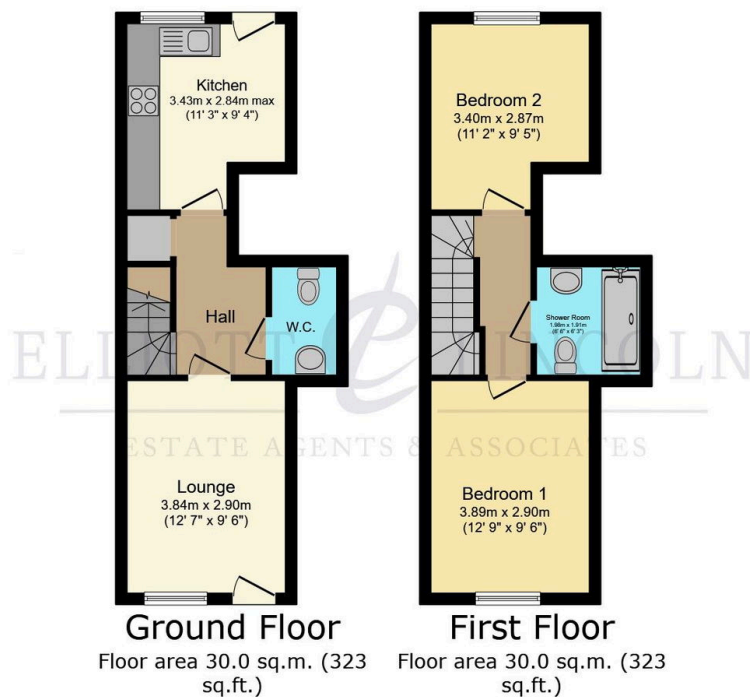
Field Place, Newport, PO30 5DY

£207,500

 2  1  0



- Double Glazing
- Gas Central heating
- Modern Home (2004)
- Newly Fitted Kitchen & Shower Room
- Downstairs WC
- Enclosed Garden
- Permit Parking
- Close to All Amenities
- Central Location
- Ideal First Time or Investment Purchase



TOTAL: 59.9 sq.m. (645 sq.ft.)

This floor plan is for illustrative purposes only. It is not drawn to scale. Any measurements, floor areas (including any total floor area), openings and orientations are approximate. No details are guaranteed, they cannot be relied upon for any purpose and do not form any part of any agreement. No liability is taken for any error, omission or misstatement. A party must rely upon its own inspection(s). Powered by www.Propertybox.io

A charming and modern two-bedroom terraced home, built in 2004, offering the perfect blend of contemporary living and practicality. Ideal for first-time buyers or as a smart investment opportunity, this property boasts a sleek, recently fitted kitchen and a stylish shower room with a large, shower enclosure.