

1 Anglers Road, Gillingham SP8 4YR

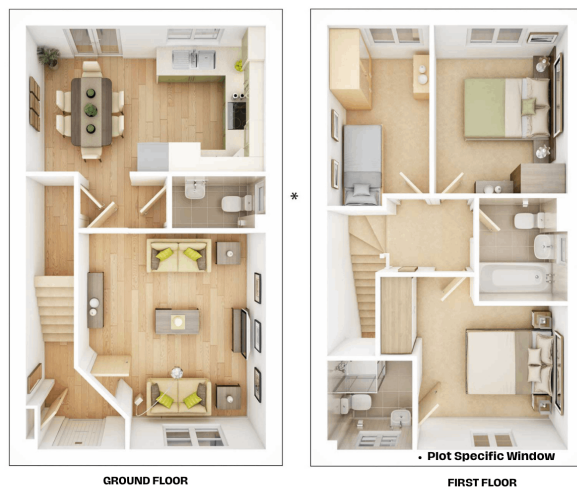
Guide Price £290,000

3 2 1



- Large Kitchen Diner with Integrated Appliances
- Main Bedroom with En-Suite
- Family Bathroom
- No onward chain
- 10 Year NHBC Builders Warranty
- Cosy Living Room
- Further Double Bedroom & Single Room
- Turf to rear garden & Shed
- Over £9000 worth of enhanced specification
- Near to green spaces with walks

THE GOSFORD



TOTAL 852 sq ft / 79.15 sq.mt

Kitchen/Dining Area
4.72m • 2.87m 15'6" • 9'5"

Living Room
4.26m max • 3.69m max 14'0" max • 12'1" max

Bedroom 1
2.96m min • 2.83m min 9'9" min • 9'4" min

Bedroom 2
3.30m • 2.63m 10'10" • 8'8"

Bedroom 3
3.55m max • 2.00m 11'8" max • 6'7"

Taylor Wimpey

EMMA BUTCHER
exp UK

All dimensions are 'or - 60mm and floorplans are not shown to scale. The kitchen layout and furniture positions are for indicative purposes only. 48/96/September 2023.

QUOTE REF: EB0191 Whether its your first home, you're downsizing, upsizing or looking at a sideways move then this 3 Bedroom Semi-Detached will tick a lot of your boxes. With accommodation set out over two floors, ample driveway parking and a low maintenance garden plus the benefit of over £9000 worth of enhanced specification it's time to book a viewing!