

59 Lakeside Drive, Gillingham SP8 4YN

Guide Price £380,000

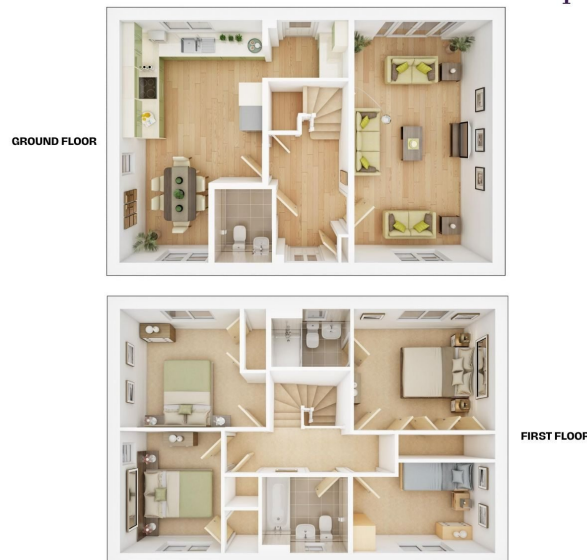
🛏 4 🚿 2 🚻 1



- Family Kitchen/ Diner with Integrated Appliances
- Downstairs Cloakroom
- Main Bedroom with En-Suite
- Low Maintenance Front & Rear Gardens
- 2 Year Builders & 10 Year NHBC Warranties
- Utility Room with Integrated Washing Machine
- Spacious Living Room
- Built in Wardrobes to three Bedrooms
- Single Garage & Driveway Parking for two cars
- Quote Ref EB0191

THE ROSSDALE

Taylor Wimpey



TOTAL 1,226 sq ft / 113.89 sq.mt

	Bedroom 1
	3.52m • 3.03m 11'7" • 9'11"
	Bedroom 2
	3.64m • 2.95m max 11'11" • 9'8" max
	Bedroom 3
	3.05m • 2.51m 10'0" • 8'3"
	Bedroom 4
	3.54m • 2.25m max 11'7" • 7'5" max
Kitchen/Dining Area	
6.09m • 3.58m max 20'0" • 11'9" max	
Living Room	
6.09m • 3.46m 20'0" • 11'4"	

EMMA BUTCHER
exp UK

All dimensions are • or – 50mm and floorplans are not shown to scale. The kitchen layout and furniture positions are for indicative purposes only. 48966/September 2021.

QUOTE REF: EB0191 Are you looking for a home which gives you an abundance of living space, a south easterly facing garden and a single garage with parking for two cars, well you may have just found it.