

## Fairways, Dilton Marsh, Westbury, Wiltshire, BA13 3RU

Guide Price £365,000

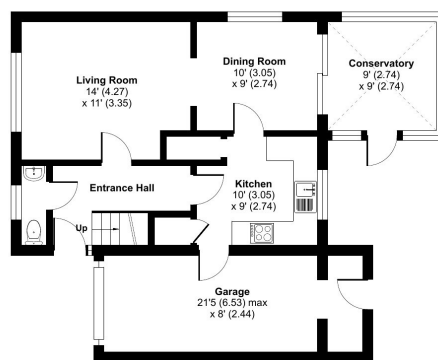
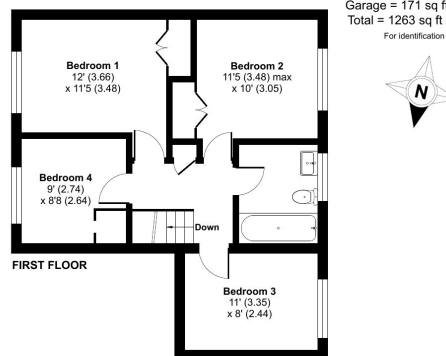
🛏 4 🚿 1 🚗 3



- Extremely well presented throughout
- Two Double Bedrooms & Generous Single Room
- Immaculately manicured Spacious Garden with Sunroom
- Main Bedroom with built in Wardrobes
- Fully Tiled Bathroom with Bath & Rain Shower
- Single Garage with Power, Lighting & Utility area

**Fairways, Dilton Marsh, Westbury, BA1**

Approximate Area = 1092 sq ft / 101.4 sq m  
 Garage = 171 sq ft / 15.9 sq m  
 Total = 1263 sq ft / 117.3 sq m  
 For identification only - Not to scale



**Certified Property Measure**  
 Floor plan produced in accordance with RICS Property Measurement Standards incorporating International Property Measurement Standards (IPMS) Residential. © richmond 2023.  
 Produced for Emma Butcher powered by exp. REF: 1040014

REF: EB0191 Simply delightful is this 4 Bedroom Detached home on Fairways. Offering an abundance of spacious accommodation over two floors. Single garage, driving parking and generous low maintenance front and rear gardens.