

off Jeffries Lane, Frome BA11 2NZ

Offers Over £675,000

3 1 2



*****NO ONWARD CHAIN***** Tranquil Setting teaming with Wildlife! This 1960's 3 Bedroom Detached Bungalow with Detached Double Garage is situated on a large plot in the Spring Gardens area of Frome. Offering an abundance of spacious accommodation, low maintenance gardens and stunning views. Quote ref; EB0191 when booking your personal tour.

- Spacious Detached Bungalow with potential to extend
- Main Bedroom with French Doors to the Garden
- Garden Room
- Detached Double Garage with Driveway Parking
- No Onward Chain
- Large Living Room & Separate Dining Room
- Two Further Double Bedrooms
- Low Maintenance Front & Rear Garden
- Tranquil setting teaming with Wildlife
- Quote ref; EB0191 when booking your personal tour.

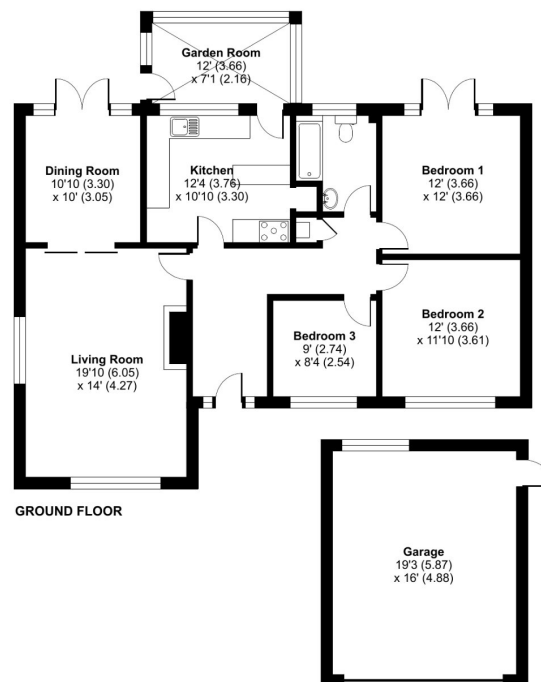
Mtoni, Spring Gardens, Frome, BA11

Approximate Area = 1240 sq ft / 115.1 sq m

Garage = 309 sq ft / 28.7 sq m

Total = 1549 sq ft / 143.9 sq m

For identification only - Not to scale



GROUND FLOOR



Floor plan produced in accordance with RICS Property Measurement Standards incorporating International Property Measurement Standards (IPMS: Residential). © and/or used 2022. Produced for Emma Butcher powered by eXp. REF: 858040