

1 Twining Brook Road, Cheadle Hulme, SK8 5PU

Offers Over £350,000

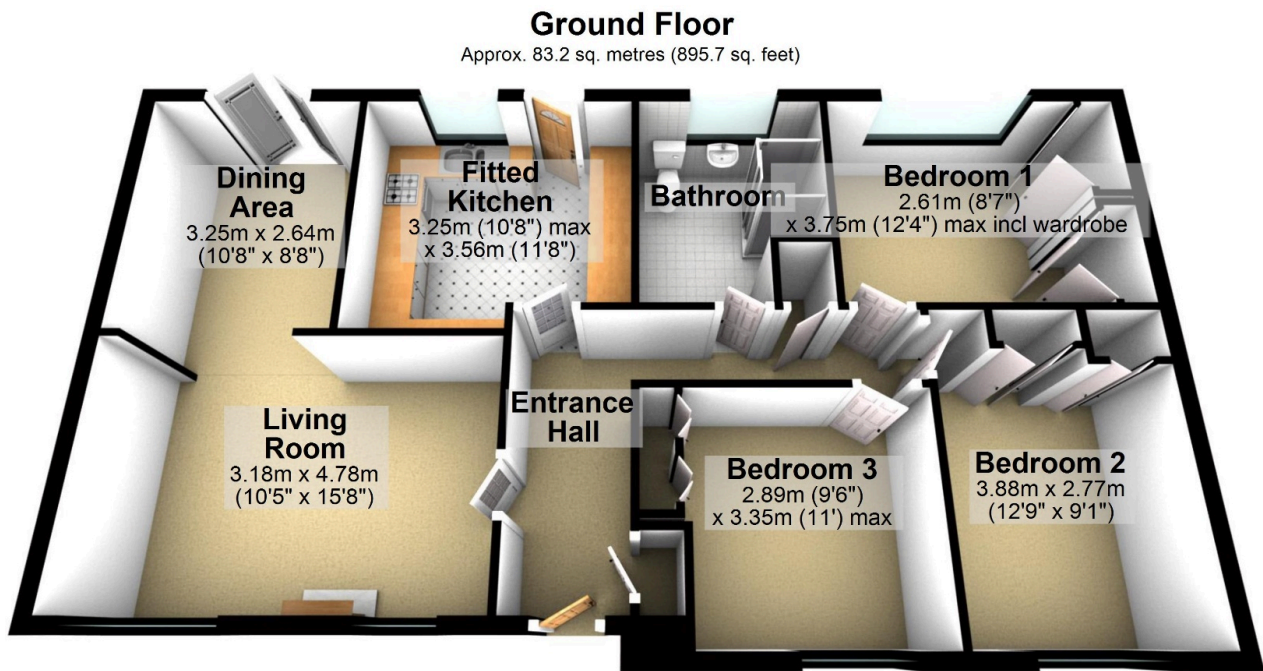
🛏 3 🚿 1 🚗 1



A recently redecorated modern detached bungalow on the popular Ladybridge Park estate, which is located close to the fashionable village of Cheadle Hulme with its range of excellent shops, eateries, cafe bars and station. Motorway access is also nearby and it is less than fifteen minutes drive to Manchester International Airport. The bungalow offers flexible and versatile living space, including the potential for a loft conversion, and includes a hall, open plan lounge and dining area, fitted kitchen, new luxury shower room and three bedrooms with fitted/built in wardrobes/storage cupboards. Other features include gas central heating and double glazing. Externally, the property occupies a generous corner plot, with gardens front and rear, a detached garage and off road parking to the rear.

Key Features

- Modern detached bungalow occupying generous corner plot
- Just redecorated, flexible and versatile living accommodation plus potential to convert loft
- Open plan living and dining space
- Gas central heating and double glazing
- Detached garage and off road parking
- Popular development close to Cheadle Hulme village and train station
- Three bedrooms with fitted/built in furniture
- Fitted kitchen and brand new luxury shower room
- Gardens front and rear
- No onward chain. Viewing recommended



Total area: approx. 83.2 sq. metres (895.7 sq. feet)