



ALASTAIR SAVILLE
ESTATE AGENTS

Greenville Drive, Maghull L31 7DE

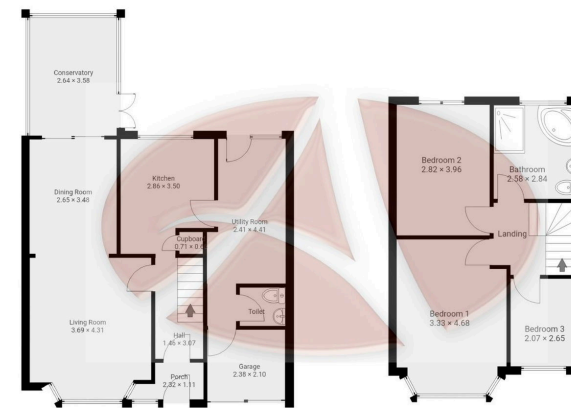
£269,950

3 1 2



- Beautiful Semi Detached Family Home
- Two Reception Rooms Plus Conservatory
- Utility Room/ Office
- Three Good Sized Bedrooms
- EPC Rating- C
- Well Presented Accommodation Throughout
- Modern Kitchen With Integrated Appliances
- Ground Floor WC
- Lovely Enclosed Low Maintenance Rear Gardens And Block Paved Driveway To Front
- Council Tax Band- C





Ground Floor approx area - 67.0m²

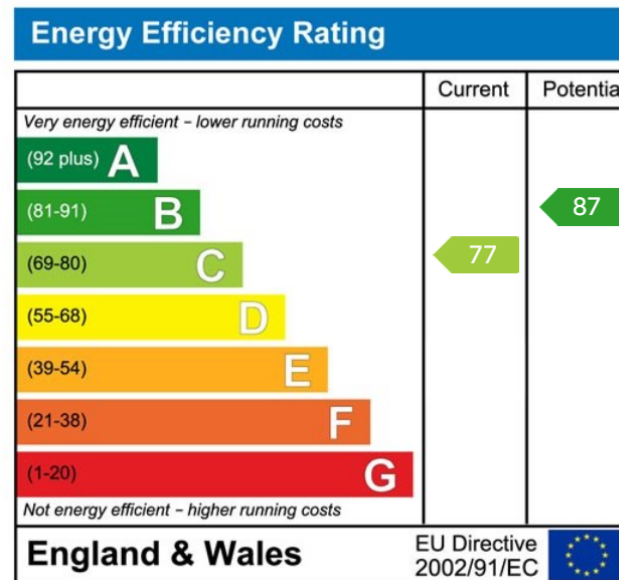
1st Floor approx area - 43.9m²

14 Greenville Drive, L31 7DE

Whilst every effort is made to accurately reproduce these floor plans, measurements are approximate, not to scale and for illustrative purposes only. Measurements, floor areas, openings and orientations are approximate. They should not form any part of an agreement. No liability is taken for any error or mis-statement. All parties must rely on their own inspections.

STUNNING SEMI DETACHED HOUSE, BEAUTIFULLY PRESENTED THROUGHOUT, THREE BEDROOMS, TWO RECEPTION ROOMS, CONSERVATORY AND MODERN BATHROOM WITH BATH AND SEPERATE SHOWER, UTILITY ROOM/ OFFICE, GROUND FLOOR WC, ENCLOSED GARDENS, OFF ROAD PARKING AND GARAGE/STORE. TUCKED AWAY LOCATION. BE QUICK!

This is one to view quickly to avoid disappointment. Being a credit to the current vendors, this semi detached house is one where you can move straight into without doing a thing! Being extremely well presented throughout, the property enjoys spacious family sized accommodation. Comprising entrance porch, hallway, lounge, dining room, modern kitchen, conservatory, utility room/office, downstairs WC and integral garage/store to the ground floor. To the first floor are three bedrooms and the family bathroom which has a bath and separate shower.



Alastair Saville Estate Agents
 25 Central Square • Maghull • Liverpool • L31 0AE
 138 Ormskirk Road • Old Roan • Liverpool • L10 3JG
 Tel: 0151 520 0001 • Website: www.alastairsaville.com
 Email: sales@alastairsaville.com • lettings@alastairsaville.com

