



ALASTAIR SAVILLE
ESTATE AGENTS

Westway, Maghull, Liverpool, L31 0EB

£139,000

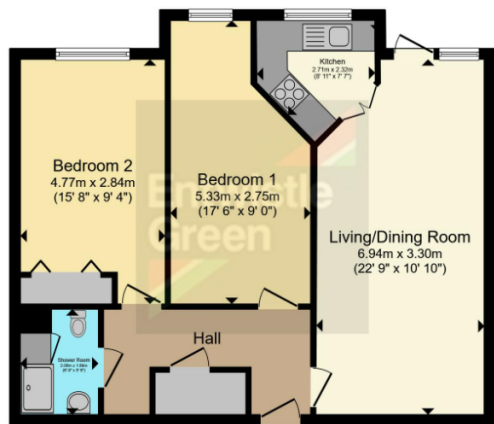
🛏️ 2 🚿 1 🛋️ 1



- Ground Floor Apartment
- Two Bedrooms
- Patio Area, South Facing
- Beautifully Present Retirement Apartment
- Large Shower Room
- Lounge/ Dining Room
- Views Over The Communal Gardens
- No Onward Chain
- EPC Rating- C
- Council Tax Band- C



GROUND FLOOR WITH OUTSIDE PATIO AREA, SOUTH FACING, TWO BEDROOMS.... NO CHAIN!! Spacious two bedroom retirement apartment is being sold with No Chain. Situated in the popular over 55's retirement complex in Mayhall Court, close to local shops, transport links and amenities. The property briefly comprises of secure communal entry system, communal reception. The Apartment, Hallway, Spacious lounge with patio door to patio area and communal gardens with a south facing aspect. The fully equipped kitchen is off the lounge overlooking the garden. There are two bedrooms and a shower room. The property benefits from electric heating, double glazing and built in storage. There is a communal laundry room, lounge and guest accommodation as well as communal gardens and parking. Offered with no chain, viewing is highly recommended.



Total floor area 66.1 sq.m. (712 sq.ft.) approx

Energy Efficiency Rating		
	Current	Potential
Very energy efficient - lower running costs		
(92 plus) A		
(81-91) B		
(69-80) C	76	79
(55-68) D		
(39-54) E		
(21-38) F		
(1-20) G		
Not energy efficient - higher running costs		
England & Wales	EU Directive 2002/91/EC	



Alastair Saville Estate Agents
 25 Central Square • Maghull • Liverpool • L31 0AE
 138 Ormskirk Road • Old Roan • Liverpool • L10 3JG
 Tel: 0151 520 0001 • Website: www.alastairsaville.com
 Email: sales@alastairsaville.com • lettings@alastairsaville.com

