



162



ANDREW SAVILLE
ESTATE AGENTS

Liverpool Road, Lydiate, Liverpool, L31 2ND

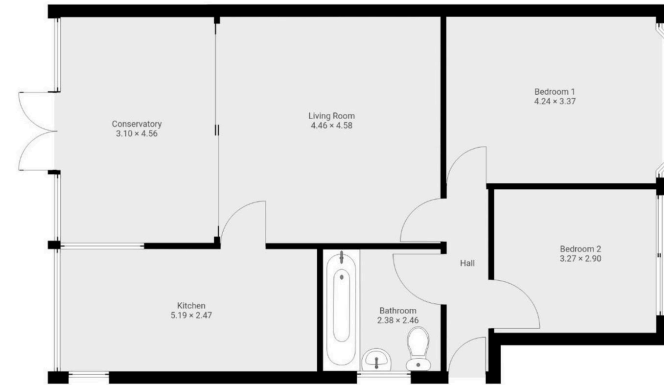
£179,000

🛏️ 2 🚿 1 🚗 1



- Two Bedroom Bungalow
- Loft Room
- Off Road Parking
- In Need Of Modernisation
- Council Tax Band C
- Conseqatory
- Spacious Rear Garden
- Scope to Extend
- EPC Rating D
- No Chain





162 Liverpool Road, L31 2ND

SEMI DETACHED BUNGALOW, EXTENDED, TWO BEDROOMS PLUS LOFT ROOM, ENCLOSED GARDENS, DRIVEWAY. LOTS OF POTENTIAL, NO ONWARD CHAIN. This semi detached bungalow is situated in the sought after location in Maghull. Enjoying a lovely quiet position, the property enjoys secluded lawned gardens. Internally to the ground floor, the property enjoys an entrance hallway, lounge, conservatory, kitchen, bathroom and two bedrooms, (From the hallway access to the loft room via ladder which could be converted) Externally there is a small garden area to the front and a long driveway. This is an opportunity not to be missed and we would recommend an early viewing.

Energy Efficiency Rating		
	Current	Potential
Very energy efficient - lower running costs		
(92 plus) A		91
(81-91) B		
(69-80) C		
(55-68) D	64	
(39-54) E		
(21-38) F		
(1-20) G		
Not energy efficient - higher running costs		
England & Wales	EU Directive 2002/91/EC	



Alastair Saville Estate Agents
 25 Central Square • Maghull • Liverpool • L31 0AE
 138 Ormskirk Road • Old Roan • Liverpool • L10 3JG
 Tel: 0151 520 0001 • Website: www.alastairsaville.com
 Email: sales@alastairsaville.com • lettings@alastairsaville.com

