



ALASTAIR SAVILLE
ESTATE AGENTS

Towers Avenue, Maghull

£255,000

🛏 3 🚿 2 🚗 1

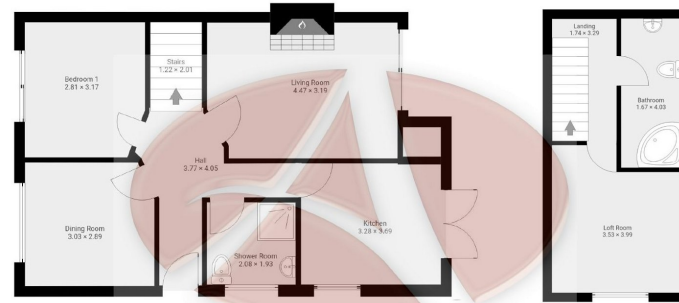
- Semi Detached Dormer Bungalow
- Modern Kitchen With Integrated Appliances
- Spacious, Versatile Accommodation
- Driveway And Garage
- EPC Rating- D
- Three Bedrooms
- Bathroom And Shower Room
- Private Enclosed Gardens To The Rear
- No Onward Chain
- Council Tax Band- C



SEMI DETACHED EXTENDED DORMER BUNGALOW, THREE BEDROOMS (ONE TO THE FIRST FLOOR), BATHROOM AND SHOWER ROOM, MODERN KITCHEN WITH INTEGRATED APPLIANCES, LOVELY LOUNGE WITH FRENCH DOORS TO THE GARDEN, OFF ROAD PARKING, GARAGE AND ENCLOSED REAR GARDENS. NO ONWARD CHAIN- BE QUICK!

This semi detached dormer bungalow sits in the ever popular location of Towers Avenue. Having been extended, the property enjoys versatile, spacious accommodation that offers flexible living. The accommodation currently comprises entrance hallway, dining room/ bedroom three, shower room, kitchen, lounge and a large double bedroom to the ground floor. To the first floor is a further large double bedroom and a bathroom. Externally there is off road parking for a number of cars, a garage and lovely enclosed gardens to the rear which enjoy a good degree of privacy. Viewing is a must on this one- be quick!





32 Towers Avenue, L31 0AJ

