



SAVILLE

Whitworth Close, Liverpool

£1,390PCM (Deposit: £1,390)

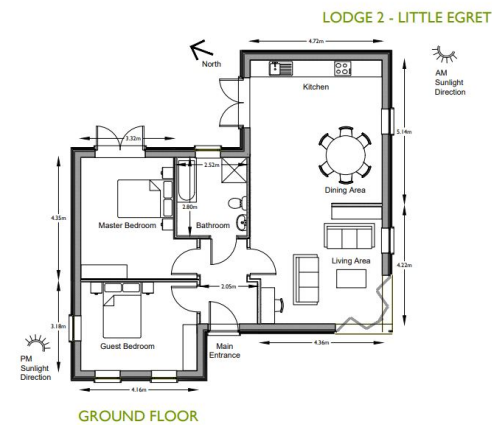
🛏 2 🍳 1 🛋 1



Tax Band: E Furnished: Not specified

OVER 55'S DEVELOPMENT Little Egret features a country chic powder blue kitchen with a wood finish worktop and aged pewter handles. The bathroom is effortlessly stylish with Porcelanosa Park Lineal Gris wall tiles and Madagascar Natural floor tiles complete with underfloor heating. The bi-fold doors in the living flood the room with natural light whilst the large patio is perfect for summer hosting. The living accommodation briefly comprises two double bedrooms, bathroom with a separate bath and shower, a beautiful open plan living area, and kitchen with integrated appliances. All of the properties in the Bournhurst development feature a mixed range of thoughtful considerations, such as USB plugs, concealed shaving points in the bathrooms & additional thermostats in the bedroom. As the development is for people aged 55 and over, at least one of the tenants living in the property, must be a minimum of 55 years old.





AREA SCHEDULE

MASTER BEDROOM - 15.64m ²	BATHROOM - 7.04m ²
GUEST BEDROOM - 13.21m ²	KITCHEN - 9.92m ²
LIVING AREA - 19.23m ²	HALLWAY - 5.64m ²
DINING AREA - 14.70m ²	TOTAL - 88.02m ²

Bournehurst
A PARK VILLAGE OF DISTINCTION

Room areas are approximate.
Please note: this document has been created for illustrative purposes only and is therefore subject to change.



NORTH ELEVATION



EAST ELEVATION



SOUTH ELEVATION



WEST ELEVATION

April 2019



Score	Energy rating	Current	Potential
92+	A		
81-91	B		90 B
69-80	C	79 C	
55-68	D		
39-54	E		
21-38	F		
1-20	G		